

Legend

- Interstate
- US Highway
- State Road
- County Border

I-10 Diversion Routes

District Two

February 2022



I-10 Diversion Maps Directory



Map ID	County	Exits	Limits	Direction	Primary Route	Secondary Route	Remarks
I-10 #1	MADISON/ JEFFERSON	233 TO 241	CR 257 TO US 221 (SR 55)	EB	NORTH ON CR 257 TO US 90 (SR 10) EAST TO US 221 (SR 55) SOUTH TO I-10		
				WB	NORTH ON US 221 (SR 55) TO US 90 (SR 10) WEST TO CR 257 SOUTH TO I-10		
I-10 #2	MADISON	241 TO 251	US 221 (SR 55) TO SR 14	EB	NORTH ON US 221 (SR 55) TO US 90 (SR 10) EAST TO SR 53 SOUTH TO MILLINOR ST WEST TO SR 14 SOUTH TO I-10		
				WB	NORTH ON SR 14 TO MILLINOR ST EAST TO SR 53 NORTH TO US 90 (SR 10) WEST TO US 221 (SR 55) SOUTH TO I-10		
I-10 #3	MADISON	251 TO 258	SR 14 TO SR 53	EB	NORTH ON SR 14 TO MILLINOR ST EAST TO SR 53 SOUTH TO I-10		
				WB	NORTH ON SR 53 TO MILLINOR ST WEST TO SR 14 SOUTH TO I-10		
I-10 #4	MADISON	258 TO 262	SR 53 TO CR 255	EB	NORTH ON SR 53 TO US 90 (SR 10) EAST TO CR 255 SOUTH TO I-10		
				WB	NORTH ON CR 255 TO US 90 (SR 10) WEST TO SR 53 SOUTH TO I-10		
I-10 #5	MADISON/ SUWANNEE	262 TO 275	CR 255 TO US 90 (SR 10)	EB	NORTH ON CR 255 TO US 90 (SR 10) EAST TO I-10		
				WB	WEST ON US 90 (SR 10) TO CR 255 SOUTH TO I-10		
I-10 #6	SUWANNEE	275 TO 283	US 90 (SR 10) TO US 129 (SR 51)	EB	EAST ON US 90 (SR 10) TO US 129 (SR 51) NORTH TO I-10	WEST ON US 90 (SR 10) TO CR 132 EAST TO US 129 (SR 51) SOUTH TO I-10	
				WB	SOUTH ON US 129 (SR 51) TO US 90 (SR 10) WEST TO I-10	NORTH ON US 129 (SR 51) TO CR 132 WEST TO US 90 (SR 10) EAST TO I-10	
I-10 #7	SUWANNEE	283 TO 292	US 129 (SR 51) TO CR 137	EB	SOUTH ON US 129 (SR 51) TO US 90 (SR 10) EAST TO CR 137 NORTH TO I-10	NORTH ON US 129 (SR 51) TO CR 136A EAST TO CR 136 EAST TO CR 137 SOUTH TO I-10	
				WB	SOUTH ON CR 137 TO US 90 (SR 10) WEST TO US 129 (SR 51) NORTH TO I-10	NORTH ON CR 137 TO CR 136 WEST TO CR 136A WEST TO US 129 (SR 51) SOUTH TO I-10	
I-10 #8	SUWANNEE/ COLUMBIA	283 TO 296	US 129 (SR 51) TO I-75	EB	NORTH ON US 129 (SR 51) TO I-75 SOUTH TO I-10	NORTH ON CR 137 TO SR 136 EAST TO I-75 SOUTH TO I-10	
				WB	NORTH ON I-75 TO US 129 (SR 51) SOUTH TO I-10	NORTH ON I-75 TO SR 136 WEST TO CR 137 SOUTH TO I-10	
I-10 #9	SUWANNEE/ COLUMBIA	296 TO 301	I-75 TO US 41 (SR 25)	EB	NORTH ON I-75 TO SR 136 EAST TO US 41 (SR 25) SOUTH TO I-10	SOUTH ON I-75 TO US 90 EAST TO US 41 (SR 25) TO I-10	
				WB	NORTH ON US 41 (SR 25) TO SR 136 WEST TO I-75 SOUTH TO I-10	SOUTH ON US 41 (SR 25) TO US 90 WEST TO I-75 NORTH TO I-10	
I-10 #10	COLUMBIA	301 TO 303	US 41 (SR 25) TO US 441 (SR 47)	EB	SOUTH ON US 41 (SR 25) TO CR 100A EAST TO US 441 (SR 47) NORTH TO I-10	NORTH ON US 41 (SR 25) TO CR 246 EAST TO US 441 (SR 47) SOUTH TO I-10	CR 246 BRIDGE WEIGHT LIMIT: 28 TONS, 2 3 OR 4 AXLES
				WB	SOUTH ON US 441 (SR 47) TO CR 100A WEST TO US 41 (SR 25) NORTH TO I-10	NORTH ON US 441 (SR 47) TO CR 246 WEST TO US 41 (SR 25) SOUTH TO I-10	

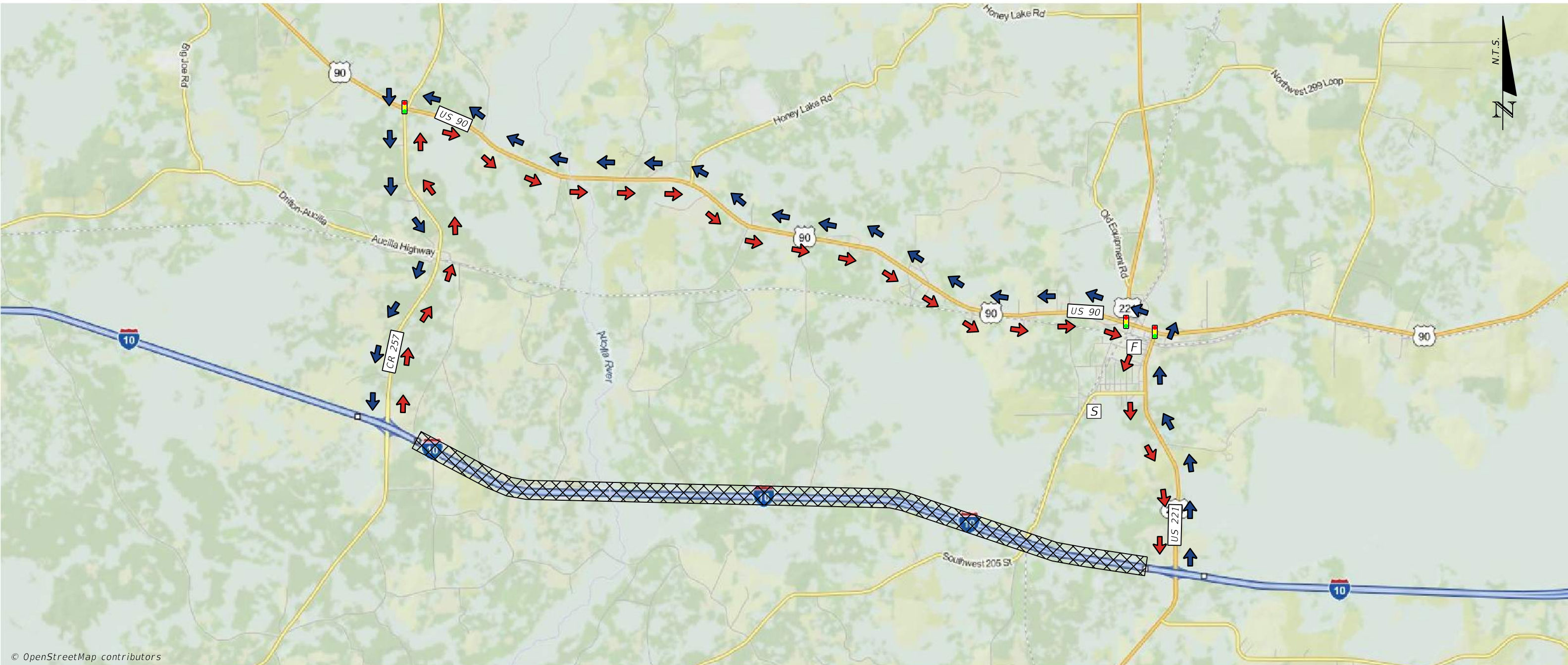
Map ID	County	Exits	Limits	Direction	Primary Route	Secondary Route	Remarks
I-10 #11	COLUMBIA/ BAKER	303 TO 324	US 441 (SR 47) TO US 90 (SR 10)	EB	SOUTH ON US 441 (SR 47) TO US 90 (SR 10) EAST TO I-10	SOUTH ON US 441 (SR 47) TO CR 250 (GUM SWAMP RD) EAST TO CR 229 SOUTH TO US 90 (SR 10) WEST TO I-10	NO SIGNS FOR CR 250 ON CR 229. TURN EASY TO MISS IN BOTH DIRECTIONS. CR 250 SIGNED AS GUM SWAMP RD AT US 441 INTERSECTION.
				WB	WEST ON US 90 (SR 10) TO US 441 (SR 47) NORTH TO I-10		
I-10 #12	BAKER	324 TO 327	US 90 (SR 10) TO CR 229	EB	EAST ON US 90 (SR 10) TO CR 229 SOUTH TO I-10		
				WB	NORTH ON CR 229 TO US 90 (SR 10) WEST TO I-10		
I-10 #13	BAKER	327 TO 333	CR 229 TO CR 125	EB	NORTH ON CR 229 TO US 90 (SR 10) EAST TO CR 125 SOUTH TO I-10	SOUTH ON CR 229 TO CR 130 EAST TO CR 125 NORTH TO I-10	
				WB	NORTH ON CR 125 TO US 90 (SR 10) WEST TO CR 229 SOUTH TO I-10	SOUTH ON CR 125 TO CR 130 WEST TO CR 229 NORTH TO I-10	
I-10 #14	BAKER	333 TO 336	CR 125 TO SR 228	EB	NORTH ON CR 125 TO US 90 (SR 10) EAST TO SR 228 SOUTH TO I-10	SOUTH ON CR 125 TO CR 130 EAST TO SR 121 NORTH TO I-10	SECONDARY ROUTE ONLY APPLIES IF CLOSURE IS FROM CR 125 TO SR 121
				WB	NORTH ON SR 228 TO US 90 (US 10) WEST TO CR 125 SOUTH TO I-10	SOUTH ON SR 121 TO CR 130 WEST TO CR 125 NORTH TO I-10	
I-10 #15	DUVAL	336 TO 343	SR 228 TO US 301	EB	NORTH ON SR 228 TO US 90 (SR 10) EAST TO US 301 SOUTH TO I-10	EAST ON SR 228 TO US 301 NORTH TO I-10	
				WB	NORTH ON US 301 TO US 90 (SR 10) WEST TO SR 228 SOUTH TO I-10	SOUTH ON US 301 TO SR 228 WEST TO I-10	
I-10 #16	DUVAL	343 TO 350	US 301 TO SR 23 (CECIL COMMERCE CENTER ROAD)	EB	NORTH ON US 301 TO US 90 (SR 10) EAST TO CR 115C (CHAFFEE RD) SOUTH TO I-10		
				WB	NORTH ON CR 115C (CHAFFEE RD) TO US 90 (SR 10) WEST TO US 301 SOUTH TO I-10		
I-10 #17	DUVAL	350 TO 351	SR 23 (CECIL COMMERCE CENTER ROAD) TO CR 115C (CHAFFEE ROAD)	EB	SOUTH ON SR 23 (CECIL COMMERCE CENTER RD) TO NORMANY BLVD EAST TO CR 115C (CHAFFEE ROAD) NORTH TO I-10		
				WB	NORTH ON CR 115C (CHAFFEE ROAD) TO US 90 (BEAVER STREET) WEST TO US 301 SOUTH TO I-10		
I-10 #18A	DUVAL	351 TO 355	CR 115C (CHAFFEE RD) TO HAMMOND BLVD	EB	NORTH ON CHAFFEE RD TO BEAVER ST (US 90) EAST TO HAMMOND BLVD SOUTH TO I-10 E	SOUTH ON CHAFFEE RD TO NORMANDY BLVD EAST TO HAMMOND BLVD NORTH TO I-10 E	
				WB	NORTH ON HAMMOND BLVD TO BEAVER ST (US 90) WEST TO CHAFFEE RD SOUTH TO I-10 W	SOUTH ON HAMMOND BLVD TO NORMANDY BLVD WEST TO CHAFFEE RD NORTH TO I-10 W	
I-10 #18B	DUVAL	355 TO 356	HAMMOND BLVD TO I-295	EB	NORTH ON HAMMOND BLVD TO BEAVER ST (US 90) EAST TO LANE AVE SOUTH TO I-10 E	SOUTH ON HAMMOND BLVD TO SR 228 (NORMANDY BLVD) EAST TO I-295 NORTH TO I-10 E	
				WB	NORTH ON LANE AVE TO BEAVER ST (US 90) TO HAMMOND BLVD SOUTH TO I-10 W	SOUTH ON I-295 TO SR 228 (NORMANDY BLVD) WEST TO HAMMOND BLVD NORTH TO I-10 W	
I-10 #19	DUVAL	356 TO 357	I-295 TO SR 103 (LANE AVE)	EB	SOUTH ON I-295 TO SR 228 (NORMANDY BLVD) EAST TO SR 103 (LANE AVE) NORTH TO I-10	NORTH ON I-295 TO COMMONWEALTH AVE EAST TO SR 103 (LANE AVE) SOUTH TO I-10	
				WB	SOUTH ON SR 103 (LANE AVE) TO SR 228 (NORMANDY BLVD) WEST TO I-295 NORTH TO I-10	NORTH ON SR 103 (LANE AVE) TO COMMONWEALTH AVE WEST TO I-295 SOUTH TO I-10	
I-10 #20	DUVAL	357 TO 358	SR 103 (LANE AVE) TO SR 111 (CASSAT AVE/EDGEWOOD AVE)	EB	SOUTH ON SR 103 (LANE AVE) TO SR 228 (NORMANDY BLVD) EAST TO SR 111 (CASSAT AVE/EDGEWOOD AVE) NORTH TO I-10	NORTH ON SR 103 (LANE AVE) TO US 90 (BEAVER ST) EAST TO SR 111 (CASSAT AVE/EDGEWOOD AVE) SOUTH TO I-10	
				WB	SOUTH ON SR 111 (CASSAT AVE/EDGEWOOD AVE) TO SR 228 (NORMANDY BLVD) WEST TO SR 103 (LANE AVE) NORTH TO I-10	NORTH ON SR 111 (CASSAT AVE/EDGEWOOD AVE) TO US 90 (BEAVER ST) WEST TO SR 103 (LANE AVE) SOUTH TO I-10	

Map ID	County	Exits	Limits	Direction	Primary Route	Secondary Route	Remarks
I-10 #21	DUVAL	358 TO 360	SR 111 (CASSAT AVE/EDGEWOOD AVE) TO SR 129 (MCDUFF AVE)	EB	SOUTH ON SR 111 (CASSAT AVE) TO LENOX AVE EAST TO RAYFORD ST EAST TO SR 129 (MCDUFF AVE) NORTH TO I-10		
				WB	NORTH ON SR 129 (MCDUFF AVE) TO LENOX AVE/HIGHWAY AVE WEST TO SR 111 (CASSAT AVE) SOUTH TO I-10		
I-10 #22	DUVAL	360 TO 362	SR 129 (MCDUFF AVE) TO STOCKTON ST	EB	SOUTH ON SR 129 (MCDUFF AVE) TO PARK ST EAST TO STOCKTON ST NORTH TO I-10		
				WB	SOUTH ON STOCKTON ST TO PARK ST WEST TO SR 129 (MCDUFF AVE) NORTH TO I-10		



FEBRUARY 2022

CR 257 TO US 221 (SR 55)



© OpenStreetMap contributors

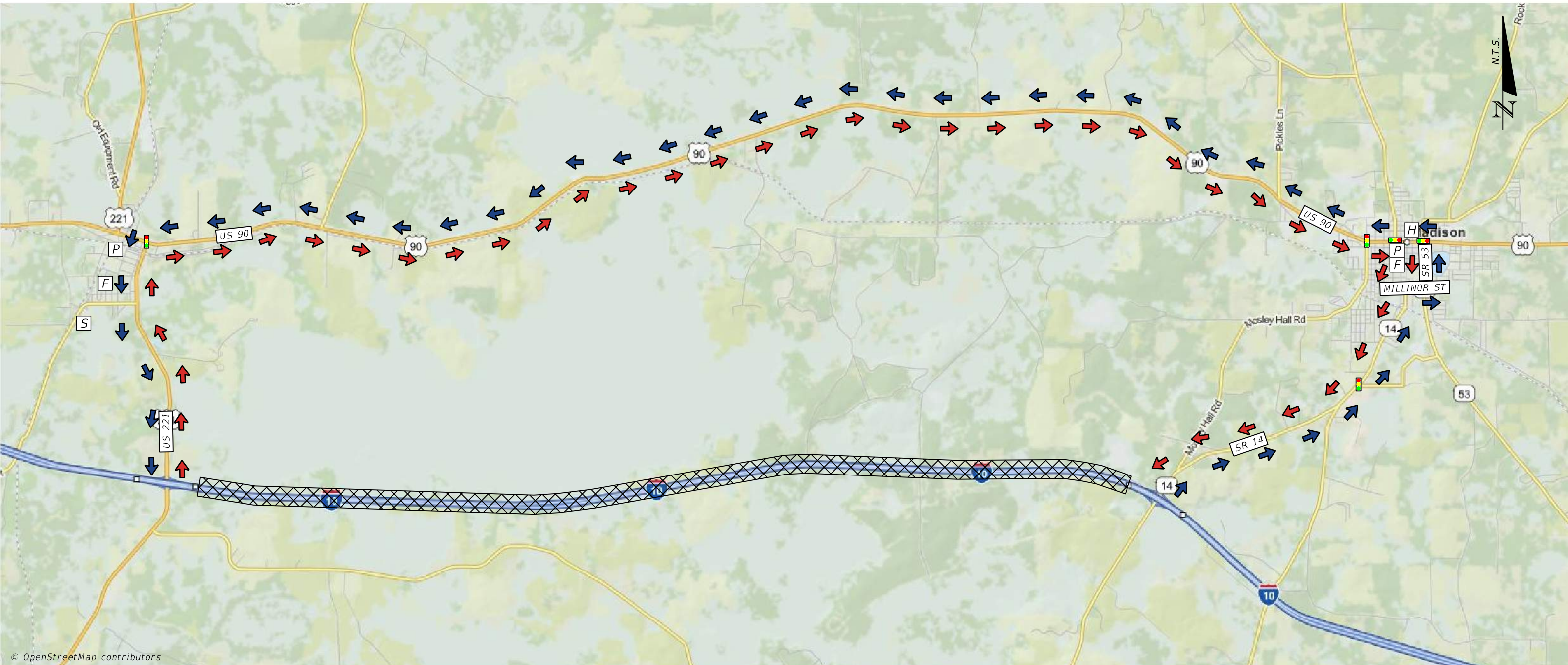
NOTES	PRIMARY		SECONDARY	
	Direction	Description	Direction	Description
	EB	EASTBOUND VEHICLES DIVERTED NORTH ON CR 257 TO US 90 (SR 10) EAST TO US 221 (SR 55) SOUTH TO I-10.	EB	N/A
	WB	WESTBOUND VEHICLES DIVERTED NORTH ON US 221 (SR 55) TO US 90 (SR 10) WEST TO CR 257 SOUTH TO I-10.	WB	N/A

LEGEND	
	AREA OF CLOSURE
	PRIMARY ROUTE EB
	PRIMARY ROUTE WB
	SECONDARY ROUTE EB
	SECONDARY ROUTE WB
	FIRE STATION
	HOSPITAL
	POLICE STATION
	SCHOOL
	SIGNAL
	FIRE STATION
	HOSPITAL
	POLICE STATION
	SCHOOL
	SIGNAL



FEBRUARY 2022

US 221 (SR 55) TO SR 14



© OpenStreetMap contributors

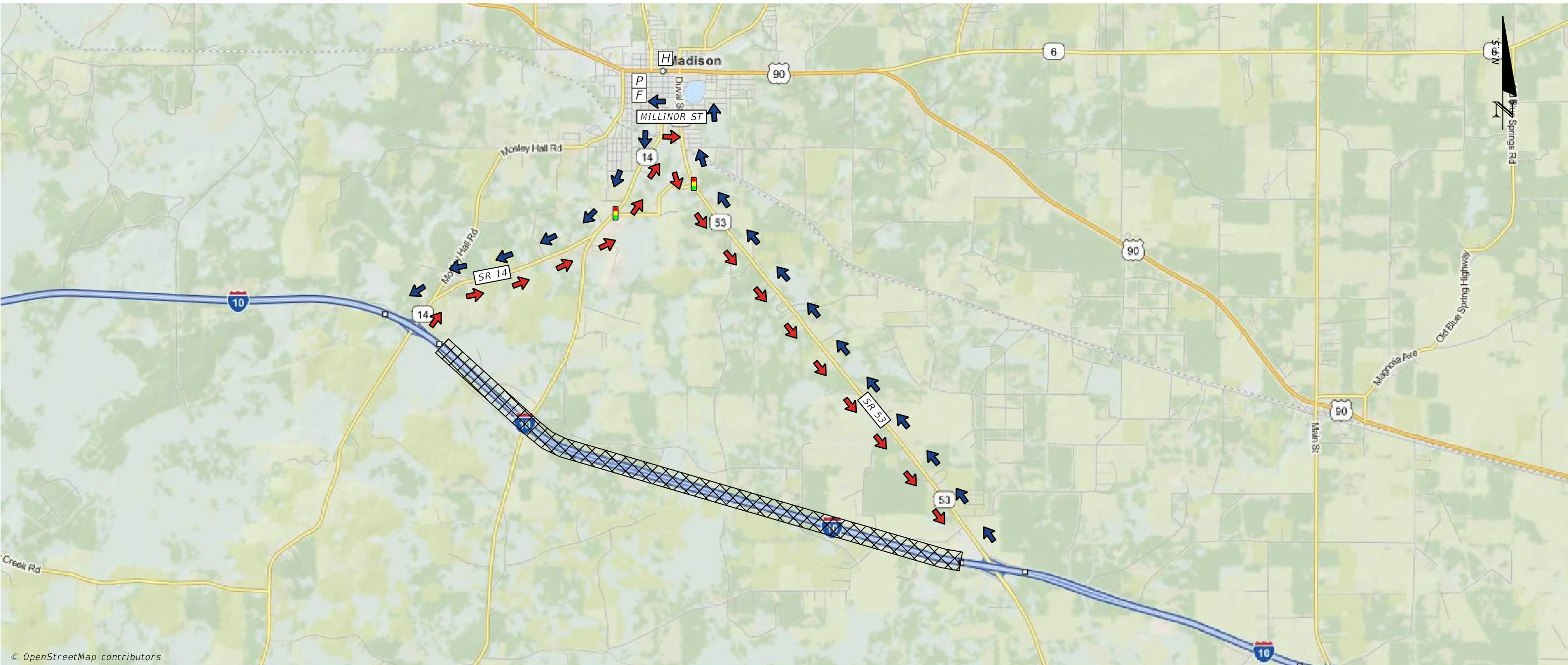
NOTES	PRIMARY	EB	EASTBOUND VEHICLES DIVERTED NORTH ON US 221 (SR 55) TO US 90 (SR 10) EAST TO SR 53 SOUTH TO MILLINOR ST WEST TO SR 14 SOUTH TO I-10.
		WB	WESTBOUND VEHICLES DIVERTED NORTH ON SR 14 TO MILLINOR ST EAST TO SR 53 NORTH TO US 90 (SR 10) WEST TO US 221 (SR 55) SOUTH TO I-10.
SECONDARY	EB	N/A	
	WB	N/A	

LEGEND	
	AREA OF CLOSURE
	PRIMARY ROUTE EB
	PRIMARY ROUTE WB
	SECONDARY ROUTE EB
	SECONDARY ROUTE WB
	FIRE STATION
	HOSPITAL
	POLICE STATION
	SCHOOL
	SIGNAL



FEBRUARY 2022

SR 14 TO SR 53



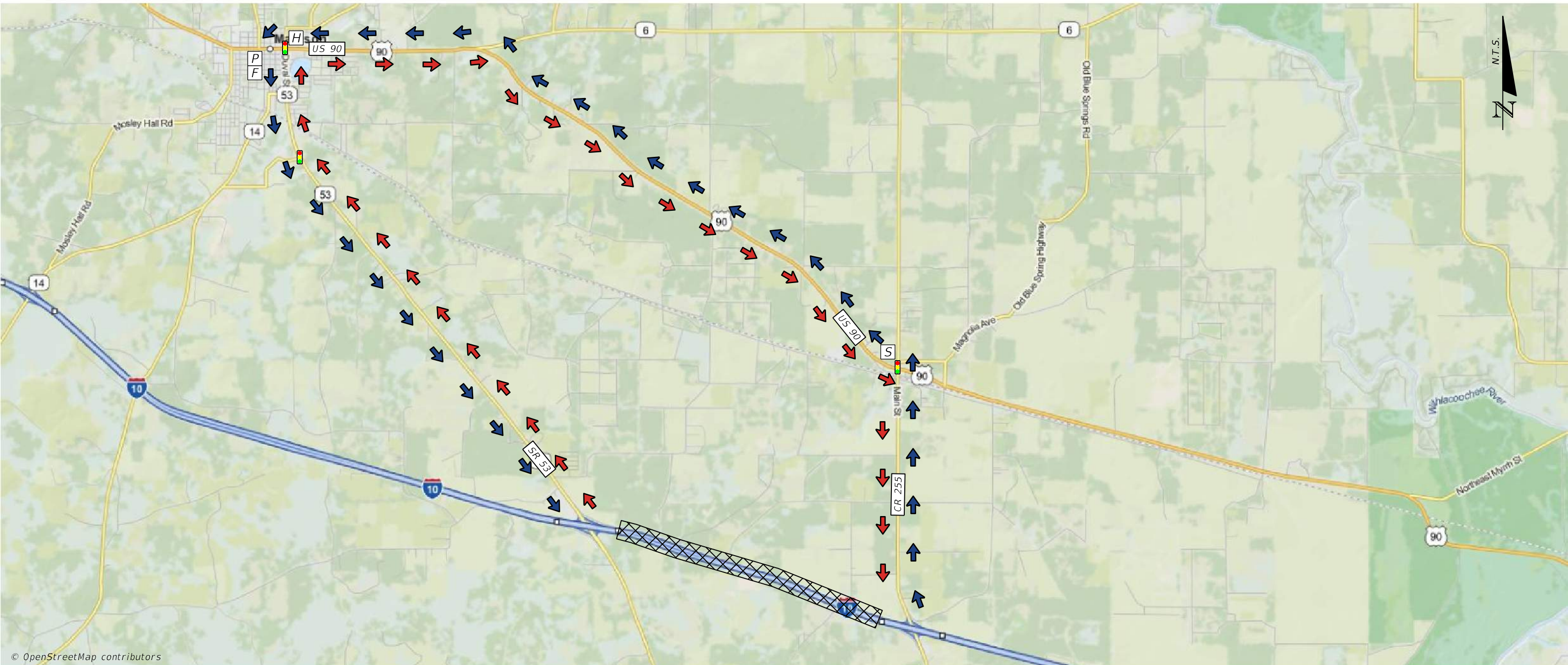
NOTES				LEGEND			
PRIMARY	EB	EASTBOUND VEHICLES DIVERTED NORTH ON SR 14 TO MILLINOR ST EAST TO SR 53 SOUTH TO I-10.		AREA OF CLOSURE		FIRE STATION	
	WB	WESTBOUND VEHICLES DIVERTED NORTH ON SR 53 TO MILLINOR ST WEST TO SR 14 SOUTH TO I-10.		PRIMARY ROUTE EB		HOSPITAL	
SECONDARY	EB	N/A		PRIMARY ROUTE WB		POLICE STATION	
	WB	N/A		SECONDARY ROUTE EB		SCHOOL	
				SECONDARY ROUTE WB		SIGNAL	

© OpenStreetMap contributors



FEBRUARY 2022

SR 53 TO CR 255



© OpenStreetMap contributors

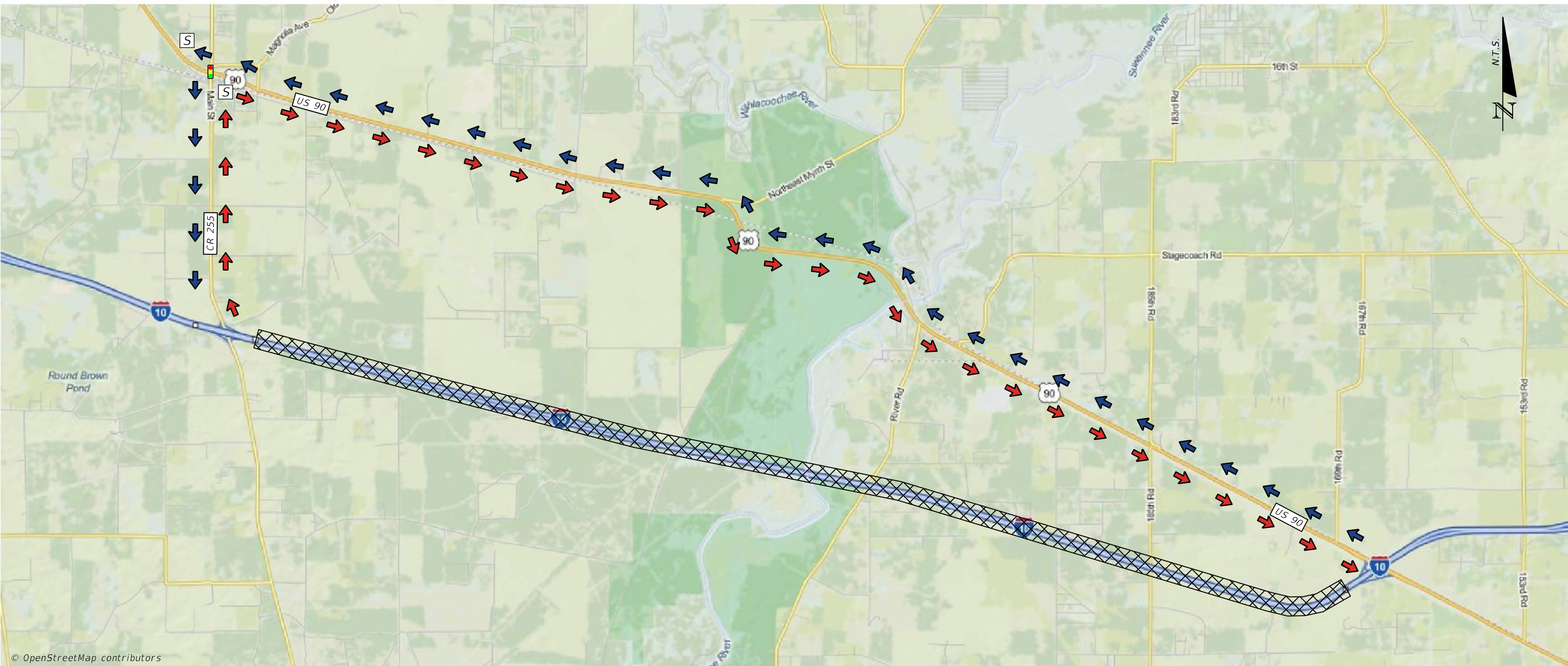
NOTES		LEGEND	
PRIMARY	EB	EASTBOUND VEHICLES DIVERTED NORTH ON SR 53 TO US 90 (SR 10) EAST TO CR 255 SOUTH TO I-10.	AREA OF CLOSURE
	WB	WESTBOUND VEHICLES DIVERTED NORTH ON CR 255 TO US 90 (SR 10) WEST TO SR 53 SOUTH TO I-10.	PRIMARY ROUTE EB
SECONDARY	EB	N/A	PRIMARY ROUTE WB
	WB	N/A	SECONDARY ROUTE EB
			SECONDARY ROUTE WB

	FIRE STATION		HOSPITAL		POLICE STATION
	HOSPITAL		POLICE STATION		SCHOOL
	SCHOOL		SIGNAL		SIGNAL



FEBRUARY 2022

CR 255 TO US 90 (SR 10)



© OpenStreetMap contributors

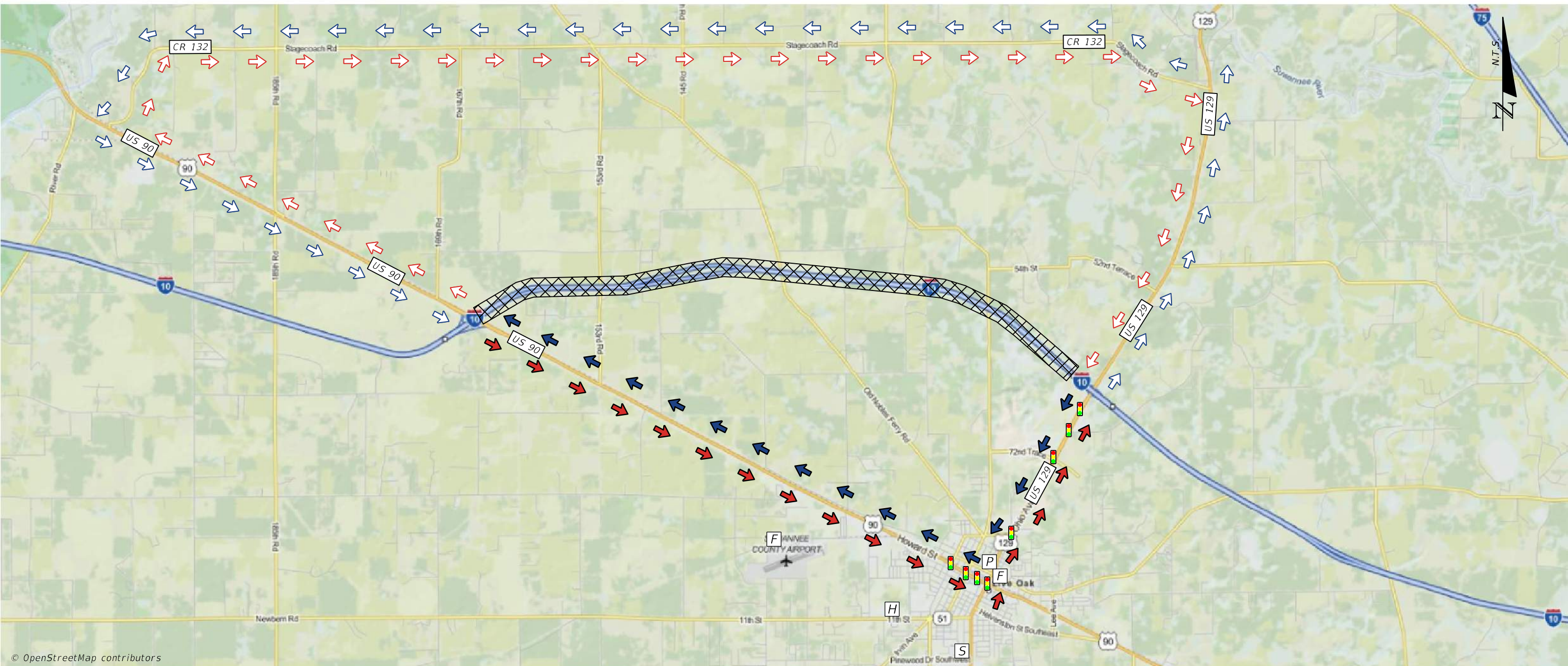
NOTES	PRIMARY	
	EB	EASTBOUND VEHICLES DIVERTED NORTH ON CR 255 TO US 90 (SR 10) EAST TO I-10.
	WB	WESTBOUND VEHICLES DIVERTED WEST ON US 90 (SR 10) TO CR 255 SOUTH TO I-10.
	SECONDARY	
EB	N/A	
WB	N/A	

LEGEND	
	AREA OF CLOSURE
	PRIMARY ROUTE EB
	PRIMARY ROUTE WB
	SECONDARY ROUTE EB
	SECONDARY ROUTE WB
	FIRE STATION
	HOSPITAL
	POLICE STATION
	SCHOOL
	SIGNAL



FEBRUARY 2022

US 90 (SR 10) TO US 129 (SR 51)



© OpenStreetMap contributors

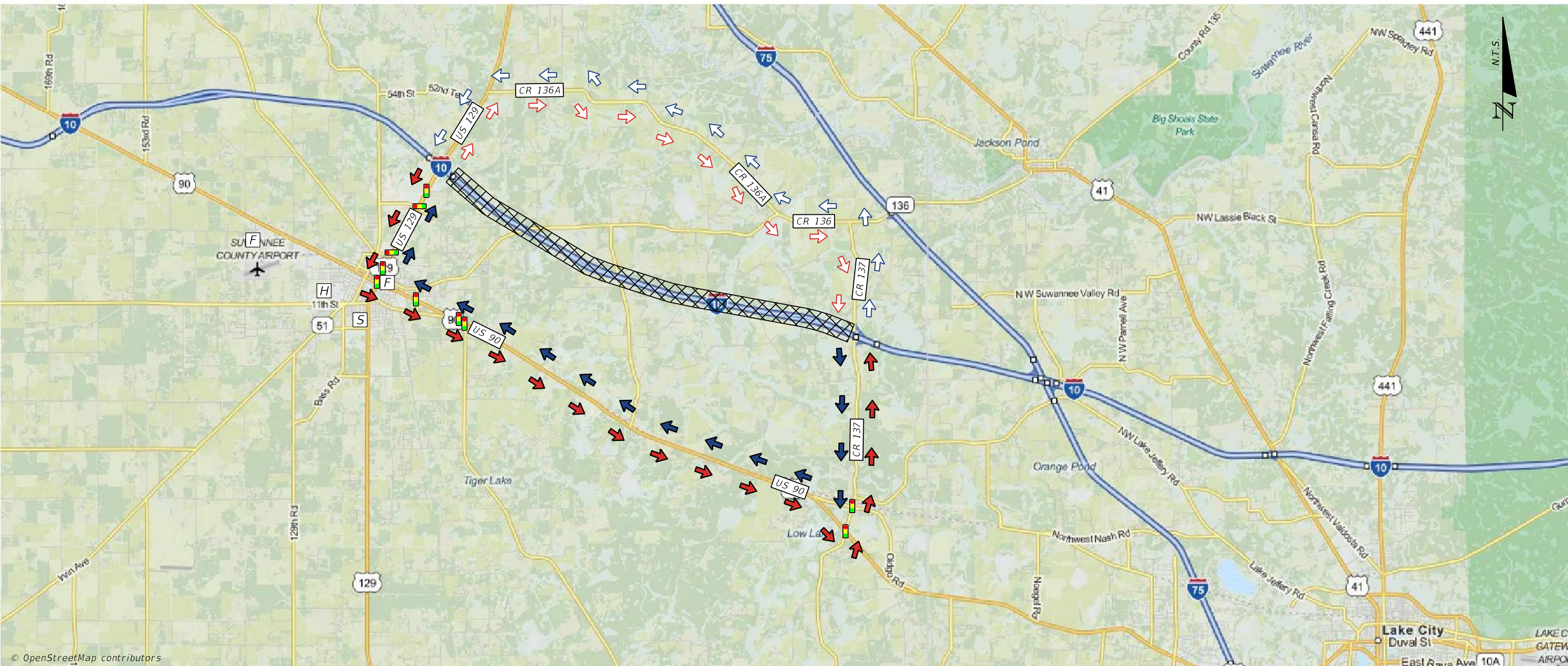
NOTES		LEGEND	
PRIMARY	EB	EASTBOUND VEHICLES DIVERTED EAST ON US 90 (SR 10) TO US 129 (SR 51) NORTH TO I-10.	AREA OF CLOSURE
	WB	WESTBOUND VEHICLES DIVERTED SOUTH ON US 129 (SR 51) TO US 90 (SR 10) WEST TO I-10.	PRIMARY ROUTE EB
SECONDARY	EB	EASTBOUND VEHICLES DIVERTED WEST ON US 90 (SR 10) TO CR 132 EAST TO US 129 (SR 51) SOUTH TO I-10.	PRIMARY ROUTE WB
	WB	WESTBOUND VEHICLES DIVERTED NORTH ON US 129 (SR 51) TO CR 132 WEST TO US 90 (SR 10) EAST TO I-10.	SECONDARY ROUTE EB
			SECONDARY ROUTE WB

	FIRE STATION		HOSPITAL
	HOSPITAL		POLICE STATION
	SCHOOL		SIGNAL
	FIRE STATION		SIGNAL
	HOSPITAL		SIGNAL
	POLICE STATION		SIGNAL
	SCHOOL		SIGNAL
	SIGNAL		



FEBRUARY 2022

US 129 (SR 51) TO CR 137



© OpenStreetMap contributors

NOTES

PRIMARY

EB EASTBOUND VEHICLES DIVERTED SOUTH ON US 129 (SR 51) TO US 90 (SR 10) EAST TO CR 137 NORTH TO I-10.

WB WESTBOUND VEHICLES DIVERTED SOUTH ON CR 137 TO US 90 (SR 10) WEST TO US 129 (SR 51) NORTH TO I-10.

SECONDARY

EB EASTBOUND VEHICLES DIVERTED NORTH ON US 129 (SR 51) TO CR 136A EAST TO CR 136 EAST TO CR 137 SOUTH TO I-10.

WB WESTBOUND VEHICLES DIVERTED NORTH ON CR 137 TO CR 136 WEST TO CR 136A WEST TO US 129 (SR 51) SOUTH TO I-10.

LEGEND

AREA OF CLOSURE



FIRE STATION



PRIMARY ROUTE EB



HOSPITAL



PRIMARY ROUTE WB



POLICE STATION



SECONDARY ROUTE EB



SCHOOL



SECONDARY ROUTE WB



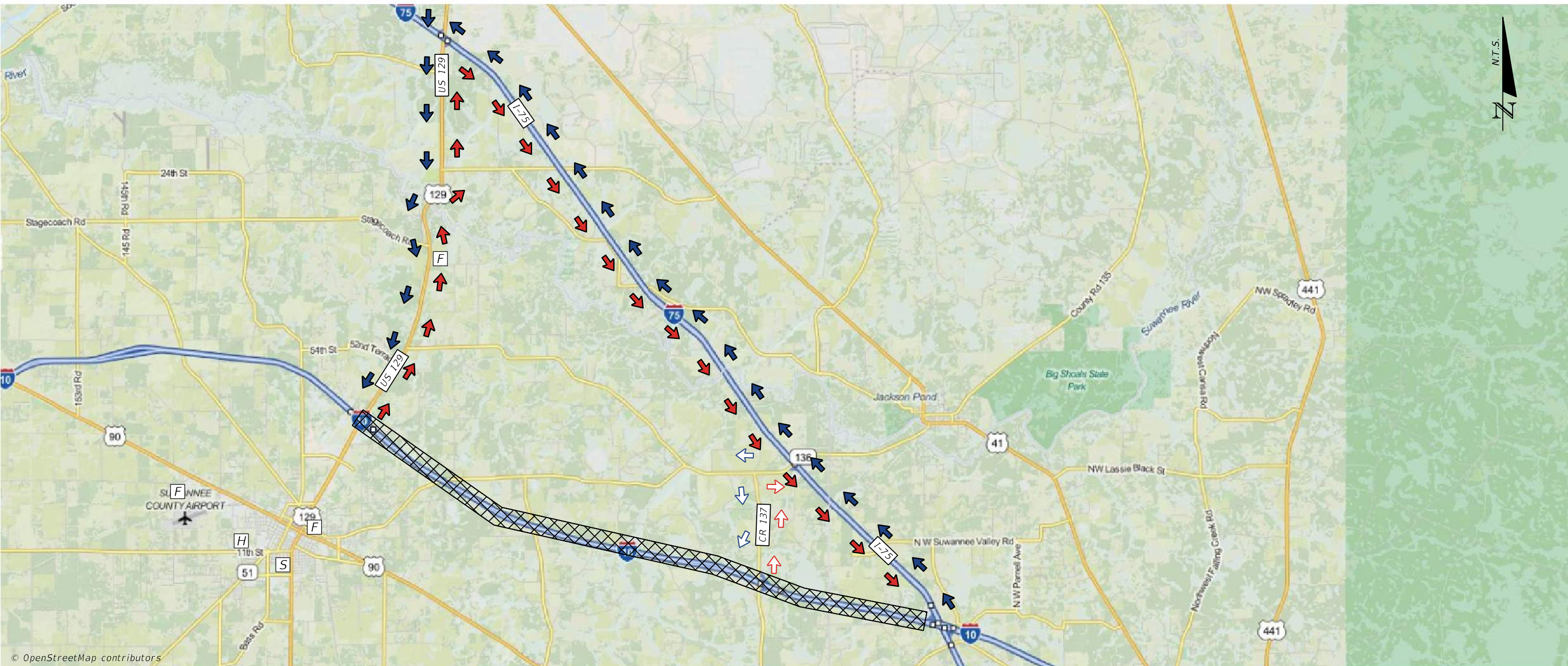
SIGNAL





FEBRUARY 2022

US 129 (SR 51) TO I-75



© OpenStreetMap contributors

NOTES

PRIMARY

EB EASTBOUND VEHICLES DIVERTED NORTH ON US 129 (SR 51) TO I-75 SOUTH TO I-10.

WB WESTBOUND VEHICLES DIVERTED NORTH ON I-75 TO US 129 (SR 51) SOUTH TO I-10.

SECONDARY

EB EASTBOUND VEHICLES DIVERTED NORTH ON CR 137 TO SR 136 EAST TO I-75 SOUTH TO I-10.

WB WESTBOUND VEHICLES DIVERTED NORTH ON I-75 SR 136 WEST TO CR 137 SOUTH TO I-10.

LEGEND

AREA OF CLOSURE



FIRE STATION



PRIMARY ROUTE EB



HOSPITAL



PRIMARY ROUTE WB



POLICE STATION



SECONDARY ROUTE EB



SCHOOL



SECONDARY ROUTE WB



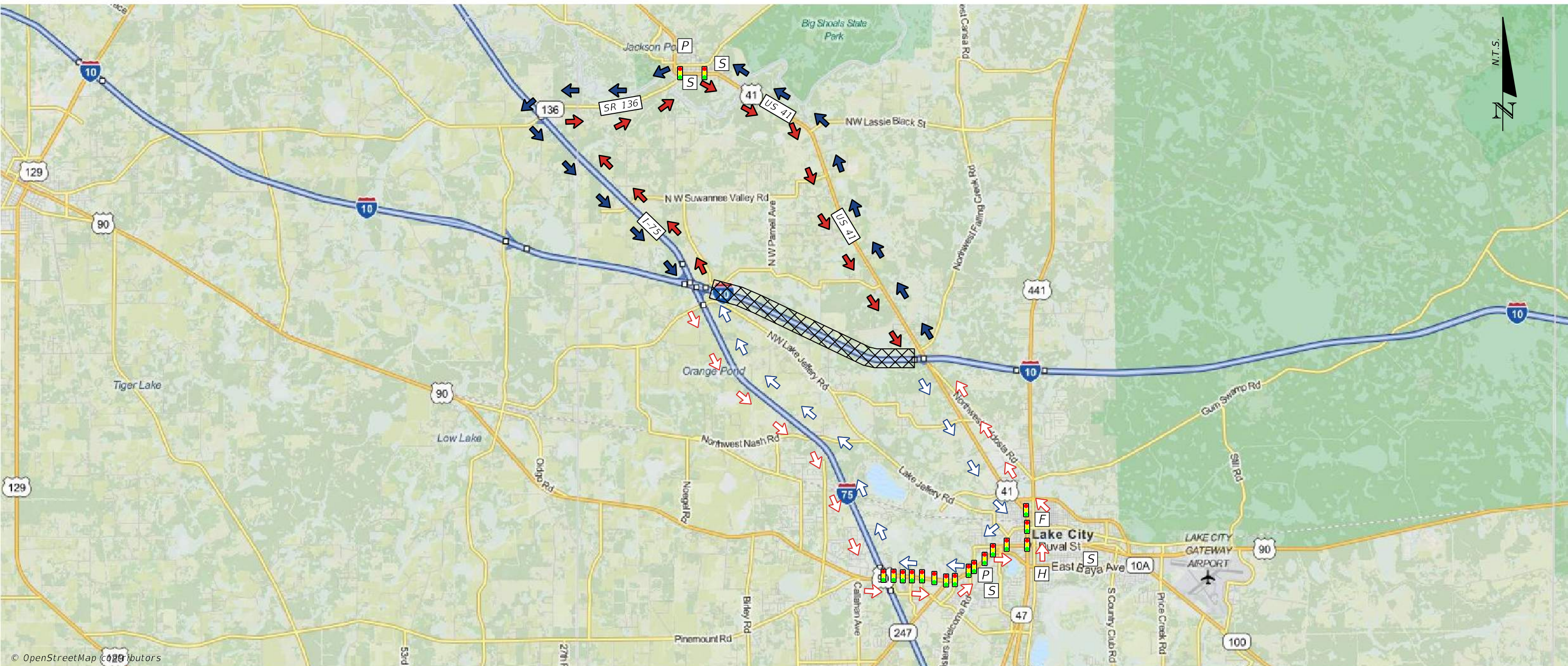
SIGNAL





FEBRUARY 2022

I-75 TO US 41 (SR 25)



NOTES

PRIMARY

EB EASTBOUND VEHICLES DIVERTED NORTH ON I-75 TO SR 136 EAST TO US 41 (SR 25) SOUTH TO I-10.

WB WESTBOUND VEHICLES DIVERTED NORTH ON US 41 (SR 25) TO SR 136 WEST TO I-75 SOUTH TO I-10.

SECONDARY

EB EASTBOUND VEHICLES DIVERTED SOUTH ON I-75 TO US 90 EAST TO US 41 (SR 25) TO I-10.

WB WESTBOUND VEHICLES DIVERTED SOUTH ON US 41 (SR 25) TO US 90 WEST TO I-75 NORTH TO I-10.

LEGEND

AREA OF CLOSURE



FIRE STATION



PRIMARY ROUTE EB



HOSPITAL



PRIMARY ROUTE WB



POLICE STATION



SECONDARY ROUTE EB



SCHOOL



SECONDARY ROUTE WB



SIGNAL

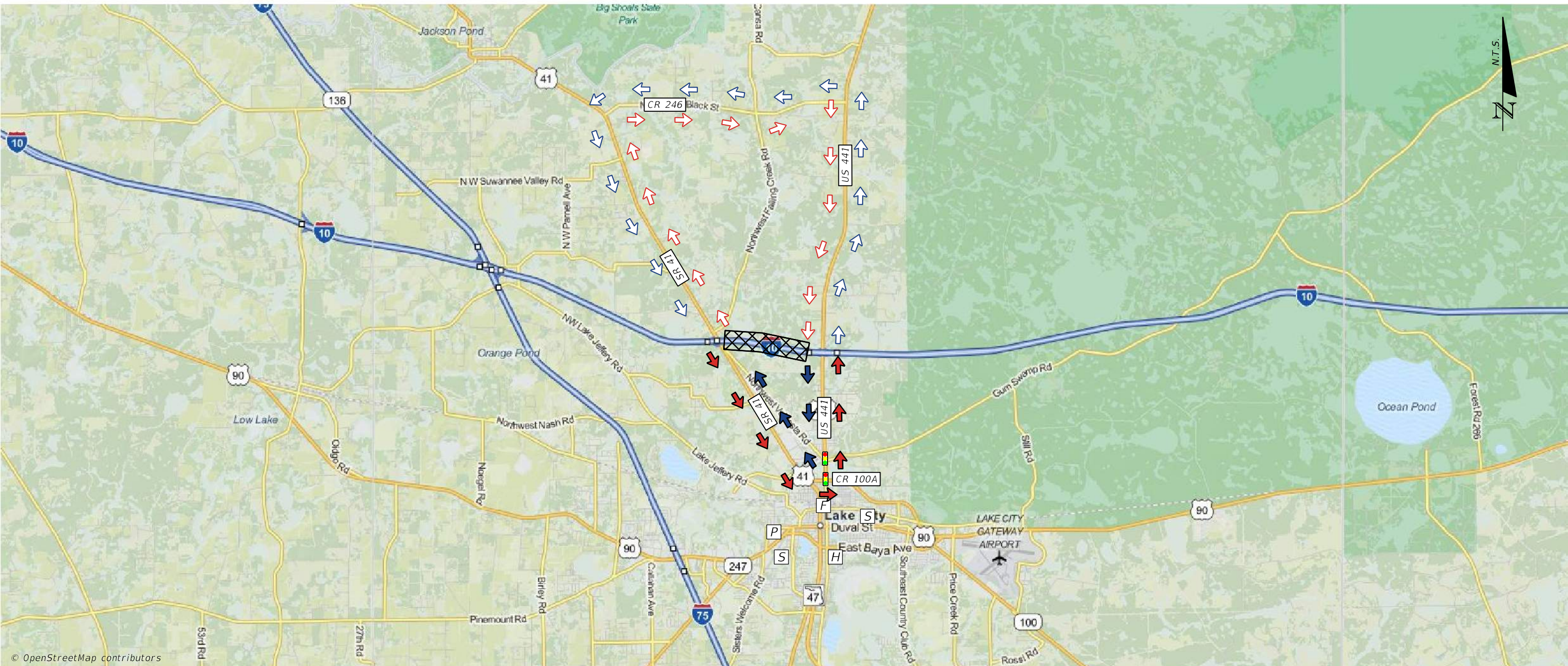


© OpenStreetMap contributors



FEBRUARY 2022

US 41 (SR 25) TO US 441 (SR 47)



© OpenStreetMap contributors

NOTES

CR 246 BRIDGE WEIGHT LIMIT: 28 TONS
2, 3, OR 4 AXLES.

PRIMARY

EB EASTBOUND VEHICLES DIVERTED SOUTH ON US 41 (SR 25) TO CR 100A EAST TO US 441 (SR 47) NORTH TO I-10.

WB WESTBOUND VEHICLES DIVERTED SOUTH ON US 441 (SR 47) TO CR 100A WEST TO US 41 (SR 25) NORTH TO I-10.

SECONDARY

EB EASTBOUND VEHICLES DIVERTED NORTH OF US 41 (SR 25) TO CR 246 EAST TO US 441 (SR 47) SOUTH TO I-10.

WB WESTBOUND VEHICLES DIVERTED NORTH ON US 441 (SR 47) TO CR 246 WEST TO US 41 (SR 25) SOUTH TO I-10.

LEGEND

AREA OF CLOSURE



FIRE STATION



PRIMARY ROUTE EB



HOSPITAL



PRIMARY ROUTE WB



POLICE STATION



SECONDARY ROUTE EB



SCHOOL



SECONDARY ROUTE WB



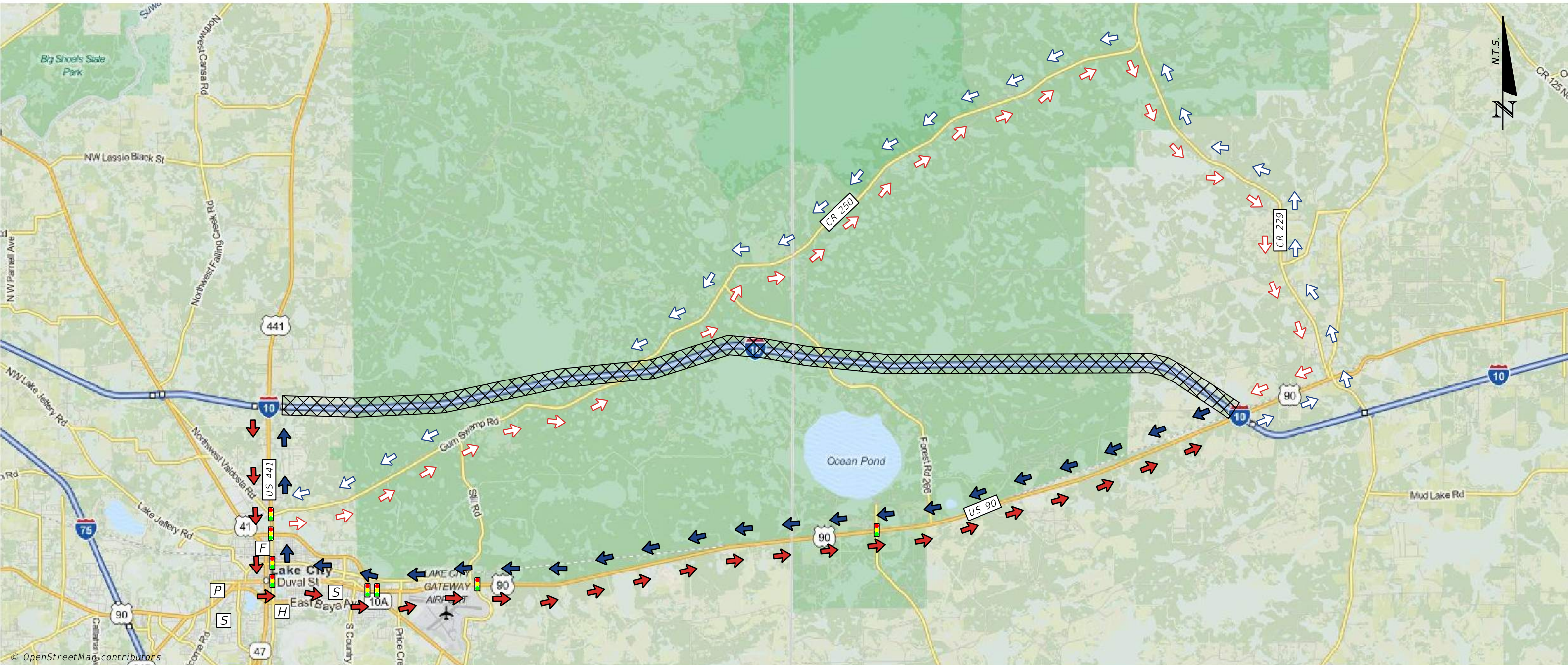
SIGNAL





FEBRUARY 2022

US 441 (SR 47) TO US 90 (SR 10)

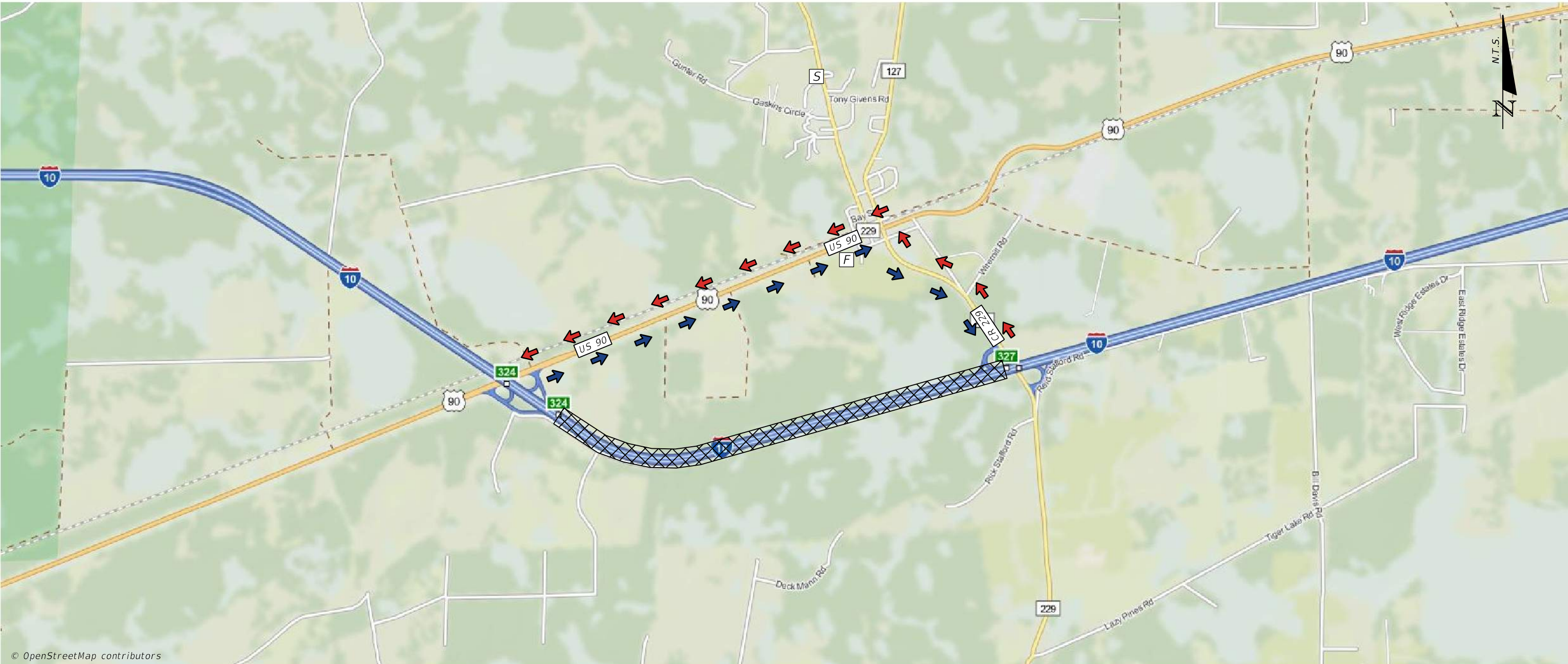


NOTES		LEGEND	
<p>NO SIGNS FOR CR 250 ON CR 229. THE TURN IS EASY TO MISS IN BOTH DIRECTIONS.</p> <p>CR 250 SIGNED AS GUM SWAMP RD AT US 441 INTERSECTION.</p>	PRIMARY	EB	EASTBOUND VEHICLES DIVERTED SOUTH ON US 441 (SR 47) TO US 90 (SR 10) EAST TO I-10.
	PRIMARY	WB	WESTBOUND VEHICLES DIVERTED WEST ON US 90 (SR 10) TO US 441 (SR 47) NORTH TO I-10.
	SECONDARY	EB	EASTBOUND VEHICLES DIVERTED SOUTH ON US 441 (SR 47) TO CR 250 EAST TO CR 229 SOUTH TO US 90 (SR 10) WEST TO I-10.
		WB	WESTBOUND VEHICLES DIVERTED EAST ON US 90 (SR 10) TO CR 229 NORTH TO CR 250 WEST TO US 441 (SR 47) NORTH TO I-10.
		AREA OF CLOSURE	FIRE STATION
		PRIMARY ROUTE EB	HOSPITAL
		PRIMARY ROUTE WB	POLICE STATION
		SECONDARY ROUTE EB	SCHOOL
		SECONDARY ROUTE WB	SIGNAL
			F
			H
			P
			S
			Traffic Light



FEBRUARY 2022

US 90 (SR 10) TO CR 229



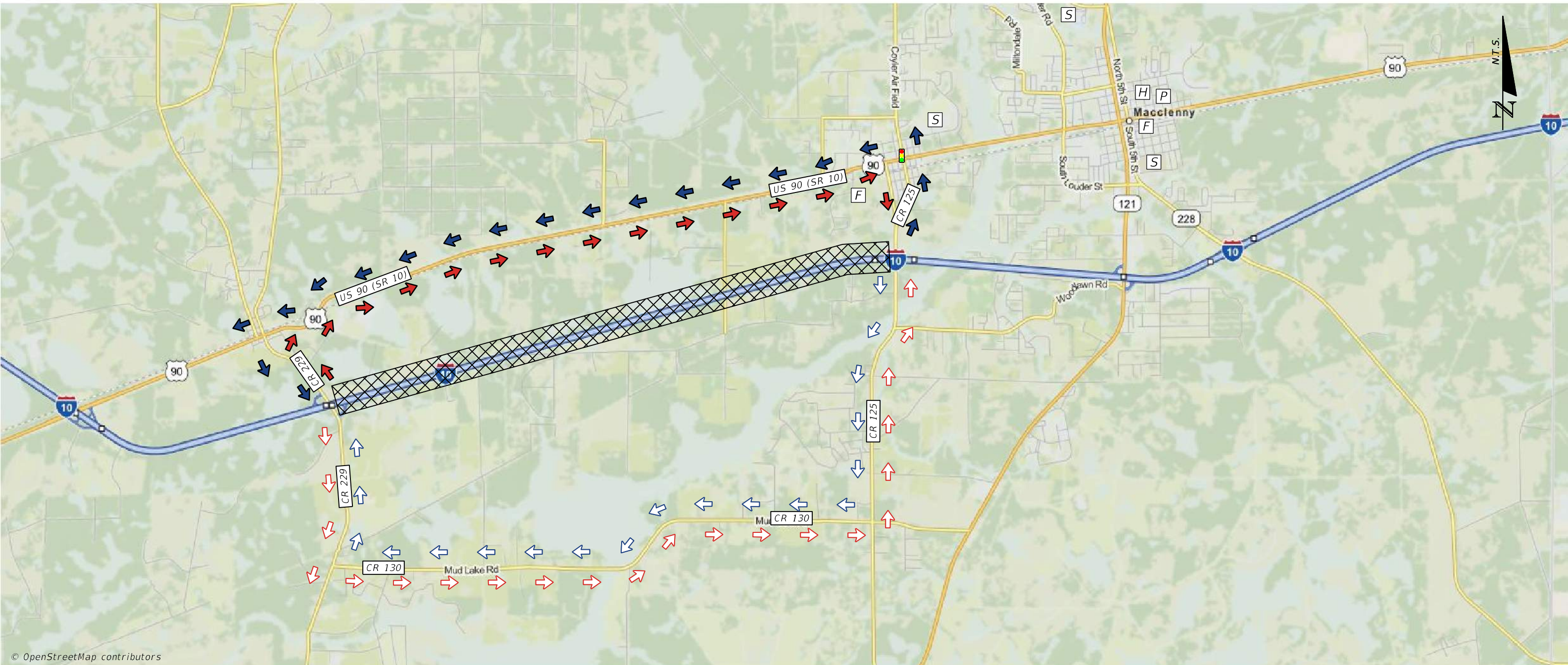
© OpenStreetMap contributors

NOTES				LEGEND			
PRIMARY	EB	EASTBOUND VEHICLES DIVERTED EAST ON US 90 (SR 10) TO CR 229 SOUTH TO I-10.		AREA OF CLOSURE		FIRE STATION	
	WB	WESTBOUND VEHICLES DIVERTED NORTH ON CR 229 TO US 90 (SR 10) WEST TO I-10.		PRIMARY ROUTE EB		HOSPITAL	
SECONDARY	EB	N/A		PRIMARY ROUTE WB		POLICE STATION	
	WB	N/A		SECONDARY ROUTE EB		SCHOOL	
				SECONDARY ROUTE WB		SIGNAL	



FEBRUARY 2022

CR 229 TO CR 125



© OpenStreetMap contributors

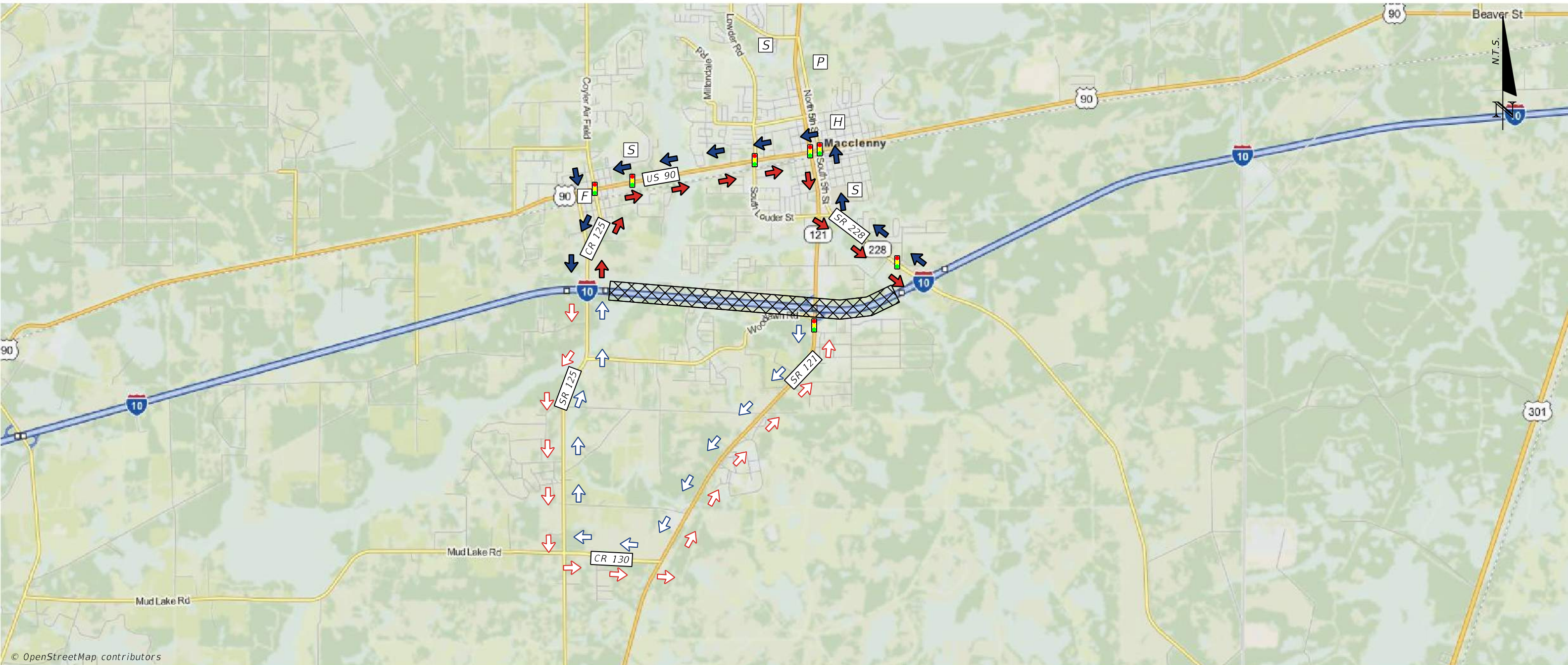
NOTES		LEGEND	
PRIMARY	EB	EASTBOUND VEHICLES DIVERTED NORTH ON CR 229 TO US 90 (SR 10) EAST TO CR 125 SOUTH TO I-10.	AREA OF CLOSURE
	WB	WESTBOUND VEHICLES DIVERTED NORTH ON CR 125 TO US 90 (SR 10) WEST TO CR 229 SOUTH TO I-10.	PRIMARY ROUTE EB
SECONDARY	EB	EASTBOUND VEHICLES DIVERTED SOUTH ON CR 229 TO CR 130 EAST TO CR 125 NORTH TO I-10.	PRIMARY ROUTE WB
	WB	WESTBOUND VEHICLES DIVERTED SOUTH ON CR 125 TO CR 130 WEST TO CR 229 NORTH TO I-10.	SECONDARY ROUTE EB
			SECONDARY ROUTE WB

	FIRE STATION		HOSPITAL		F
	HOSPITAL		POLICE STATION		H
	POLICE STATION		SCHOOL		P
	SCHOOL		SIGNAL		S
	SIGNAL				



FEBRUARY 2022

CR 125 TO SR 228

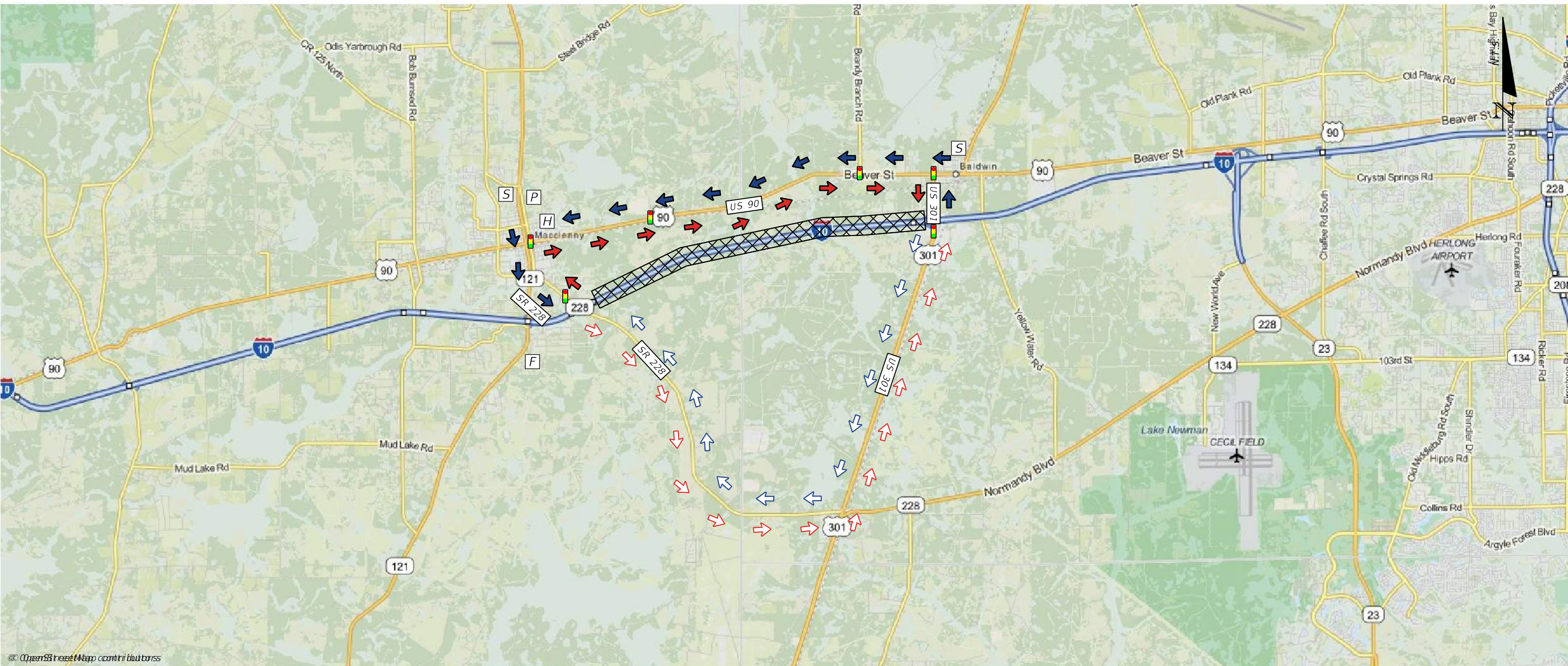


<p>NOTES</p> <p>SECONDARY ROUTE ONLY APPLIES IF CLOSURE IS FROM CR 125 TO SR 121.</p>	PRIMARY	EB	EASTBOUND VEHICLES DIVERTED NORTH ON CR 125 TO US 90 (SR 10) EAST TO SR 228 SOUTH TO I-10.	<p>LEGEND</p> <p>AREA OF CLOSURE </p> <p>PRIMARY ROUTE EB </p> <p>PRIMARY ROUTE WB </p> <p>SECONDARY ROUTE EB </p> <p>SECONDARY ROUTE WB </p>	<p>FIRE STATION </p> <p>HOSPITAL </p> <p>POLICE STATION </p> <p>SCHOOL </p> <p>SIGNAL </p>	<p>F</p> <p>H</p> <p>P</p> <p>S</p> <p>T</p>
		WB	WESTBOUND VEHICLES DIVERTED NORTH ON SR 228 TO US 90 SR (10) WEST TO CR 125 SOUTH TO I-10.			
	SECONDARY	EB	EASTBOUND VEHICLES DIVERTED SOUTH ON CR 125 TO CR 130 EAST TO SR 121 NORTH TO I-10.			
		WB	WESTBOUND VEHICLES DIVERTED SOUTH ON SR 121 TO CR 130 WEST TO CR 125 NORTH TO I-10.			



FEBRUARY 2022

SR 228 TO US 301



NOTES

PRIMARY

EB EASTBOUND VEHICLES DIVERTED NORTH ON SR 228 TO US 90 (SR 10) EAST TO US 301 SOUTH TO I-10.

WB WESTBOUND VEHICLES DIVERTED NORTH ON US 301 TO US 90 (SR 10) WEST TO SR 228 SOUTH TO I-10.

SECONDARY

EB EASTBOUND VEHICLES DIVERTED EAST ON SR 228 TO US 301 NORTH TO I-10.

WB WESTBOUND VEHICLES DIVERTED SOUTH ON US 301 TO WEST SR 228 TO I-10.

LEGEND

AREA OF CLOSURE



FIRE STATION



PRIMARY ROUTE EB



HOSPITAL



PRIMARY ROUTE WB



POLICE STATION



SECONDARY ROUTE EB



SCHOOL



SECONDARY ROUTE WB



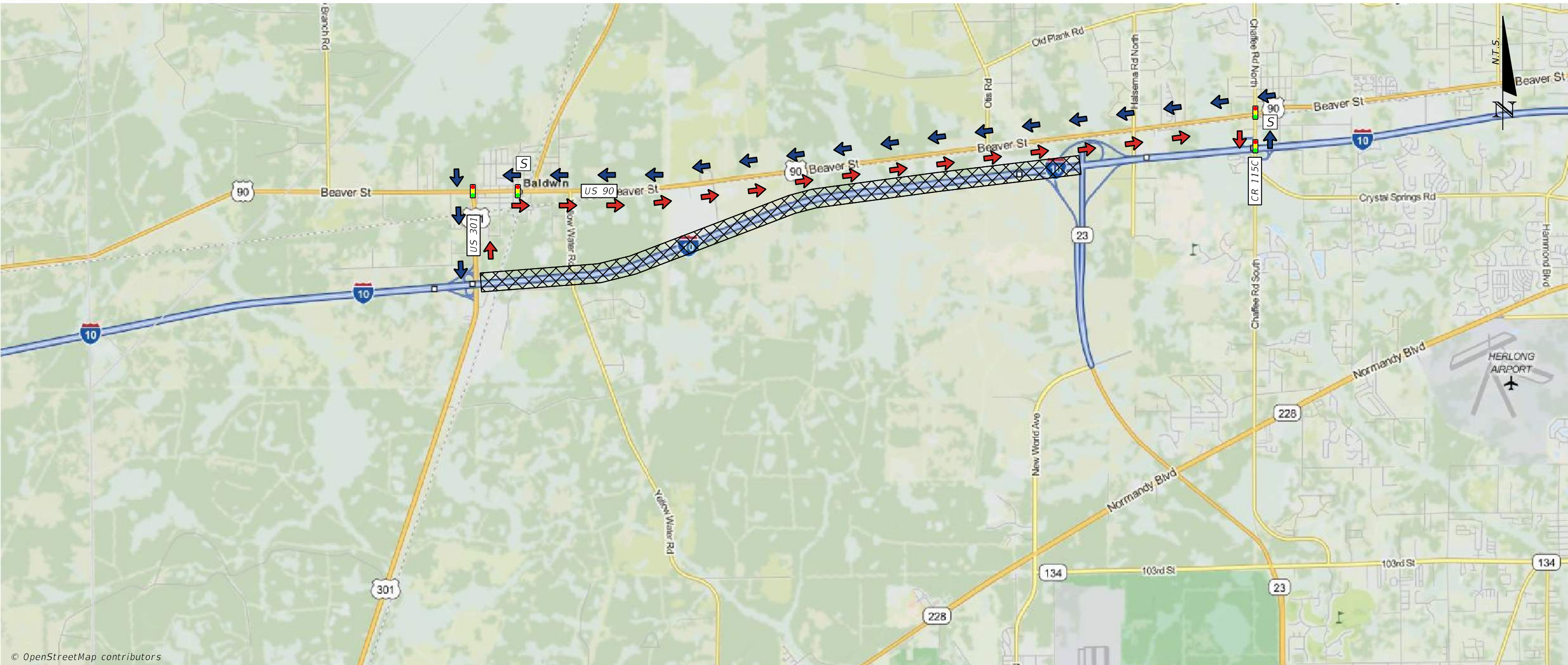
SIGNAL





FEBRUARY 2022

US 301 TO SR 23 (CECIL COMMERCE CENTER ROAD)



© OpenStreetMap contributors

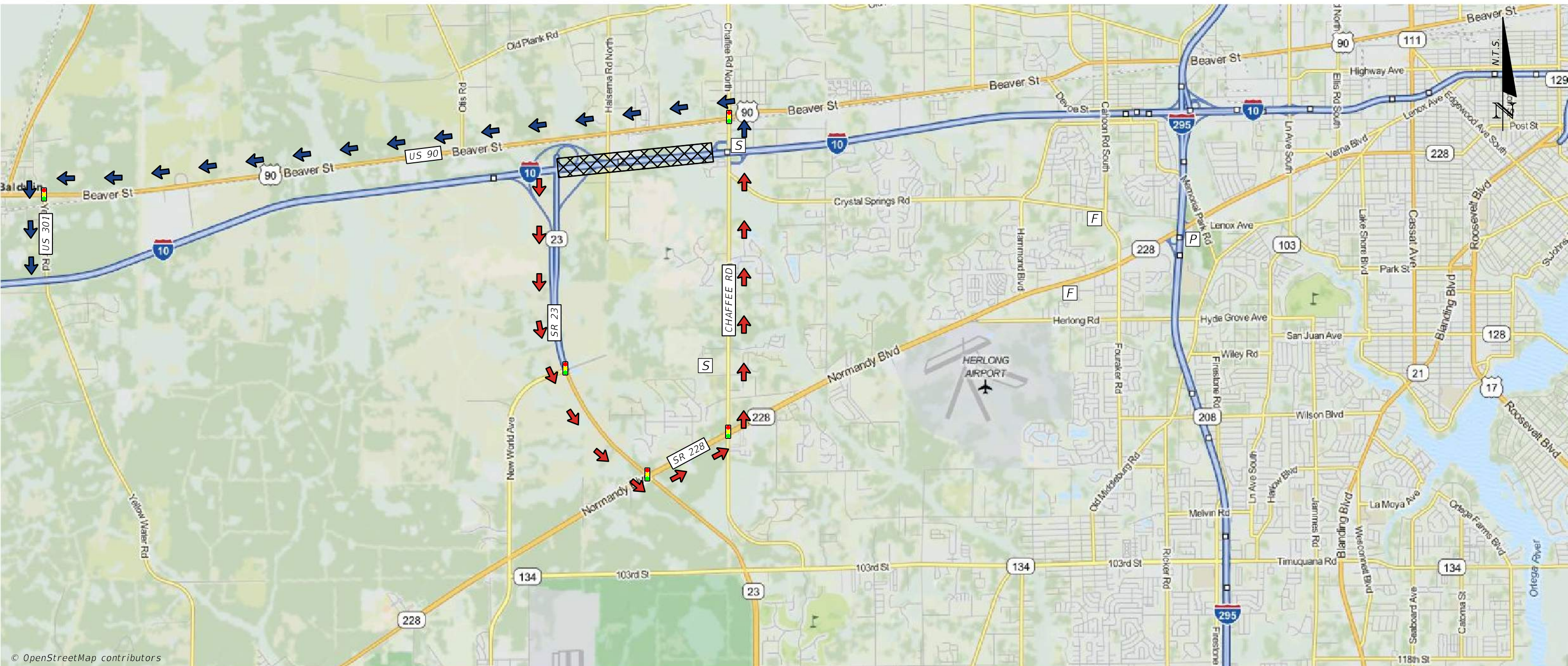
NOTES		LEGEND	
PRIMARY	EB	EASTBOUND VEHICLES DIVERTED NORTH ON US 301 TO US 90 (SR 10) EAST TO CR 115C (CHAFFEE ROAD) SOUTH TO I-10.	AREA OF CLOSURE
	WB	WESTBOUND VEHICLES DIVERTED NORTH ON CR 115C (CHAFFEE ROAD) TO US 90 (SR 10) WEST TO US 301 SOUTH TO I-10.	PRIMARY ROUTE EB
SECONDARY	EB	N/A	PRIMARY ROUTE WB
	WB	N/A	SECONDARY ROUTE EB
			SECONDARY ROUTE WB

	FIRE STATION		HOSPITAL
	SCHOOL		POLICE STATION
	SIGNAL		SCHOOL
			SIGNAL



SR 23 (CECIL COMMERCE CENTER ROAD) TO CR 115C (CHAFFEE ROAD)

FEBRUARY 2022



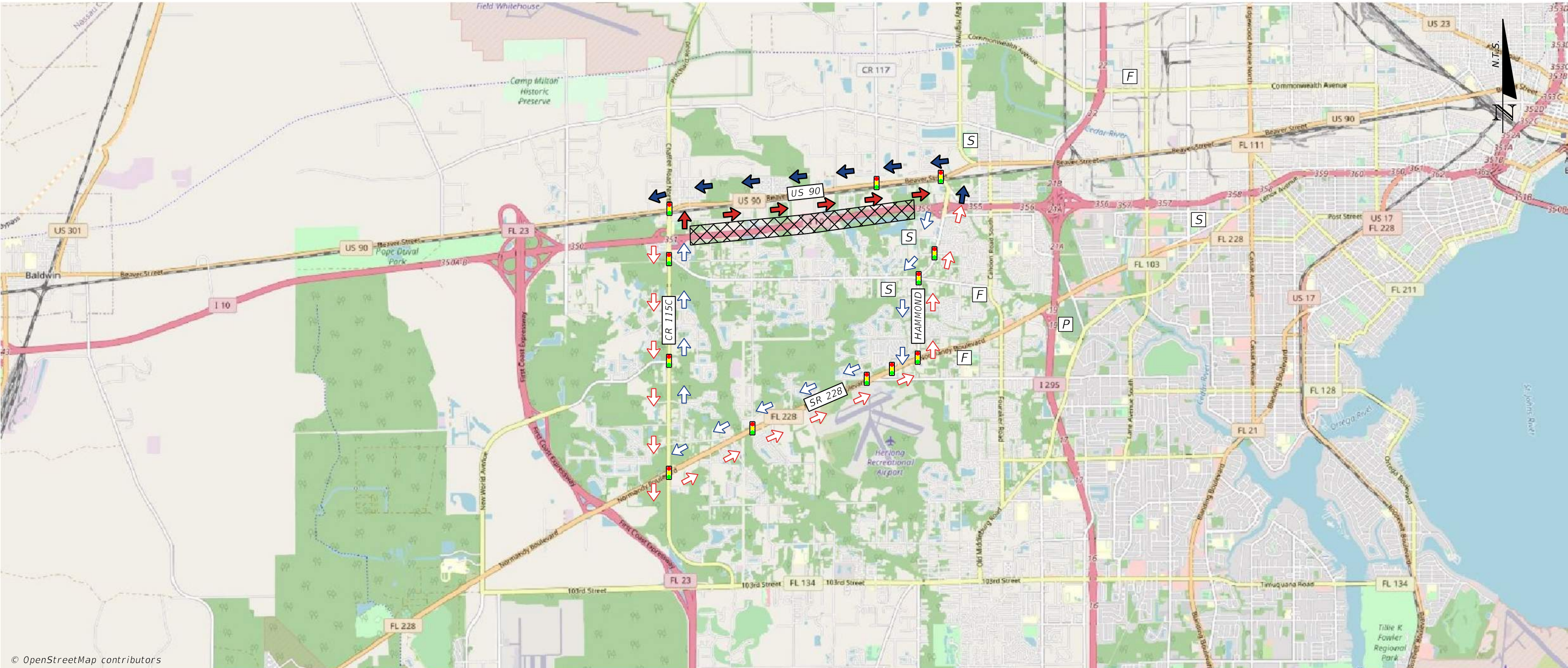
© OpenStreetMap contributors

NOTES		LEGEND	
PRIMARY	EB	EASTBOUND VEHICLES DIVERTED SOUTH ON SR 23 (CECIL COMMERCE CENTER RD) TO NORMANDY BLVD EAST TO CR 115C (CHAFFEE RD) NORTH TO I-10.	AREA OF CLOSURE
	WB	WESTBOUND VEHICLES DIVERTED NORTH ON CR 115C (CHAFFEE ROAD) TO US 90 (BEAVER STREET) WEST TO US 301 SOUTH TO I-10.	PRIMARY ROUTE EB
SECONDARY	EB	N/A	PRIMARY ROUTE WB
	WB	N/A	SECONDARY ROUTE EB
			SECONDARY ROUTE WB

	FIRE STATION	
	HOSPITAL	
	POLICE STATION	
	SCHOOL	
	SIGNAL	

CR 115C (CHAFFEE ROAD) TO HAMMOND BOULEVARD

FEBRUARY 2022



© OpenStreetMap contributors

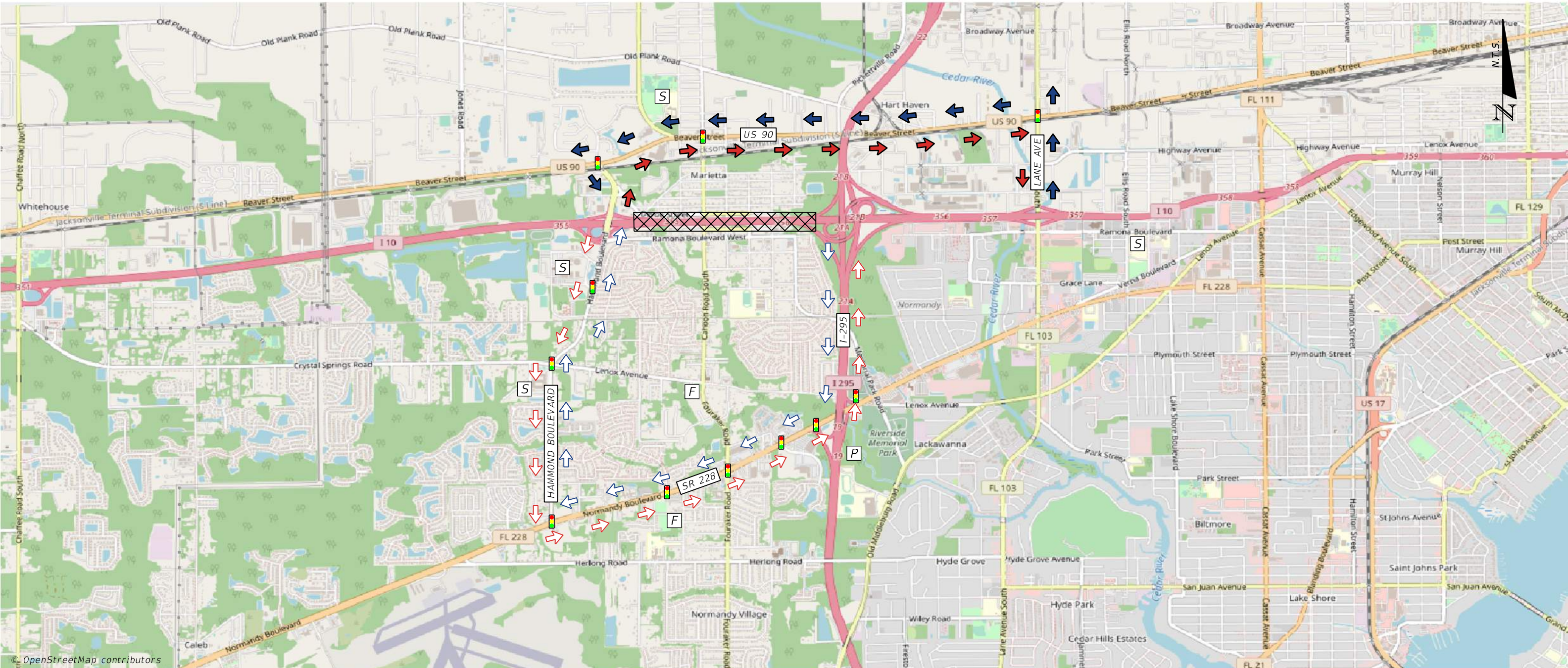
NOTES		LEGEND	
PRIMARY	EB	EASTBOUND VEHICLES DIVERTED NORTH ON CR 115C (CHAFFEE ROAD) TO BEAVER STREET (US 90) EAST TO HAMMOND BOULEVARD SOUTH TO I-10 EAST.	AREA OF CLOSURE
	WB	WESTBOUND VEHICLES DIVERTED NORTH ON HAMMOND BOULEVARD TO BEAVER STREET (US 90) WEST TO CR 115C (CHAFFEE ROAD) SOUTH TO I-10 WEST.	PRIMARY ROUTE EB
SECONDARY	EB	EASTBOUND VEHICLES DIVERTED SOUTH ON CR 115C (CHAFFEE ROAD) TO NORMANDY BOULEVARD EAST TO HAMMOND BOULEVARD NORTH TO I-10 EAST.	PRIMARY ROUTE WB
	WB	WESTBOUND VEHICLES DIVERTED SOUTH ON HAMMOND BOULEVARD TO NORMANDY BOULEVARD WEST TO CR 115A (CHAFFEE ROAD) NORTH TO I-10 WEST.	SECONDARY ROUTE EB
			SECONDARY ROUTE WB

	FIRE STATION	[F]
	HOSPITAL	[H]
	POLICE STATION	[P]
	SCHOOL	[S]
	SIGNAL	[Signal]



FEBRUARY 2022

HAMMOND BOULEVARD TO I-295

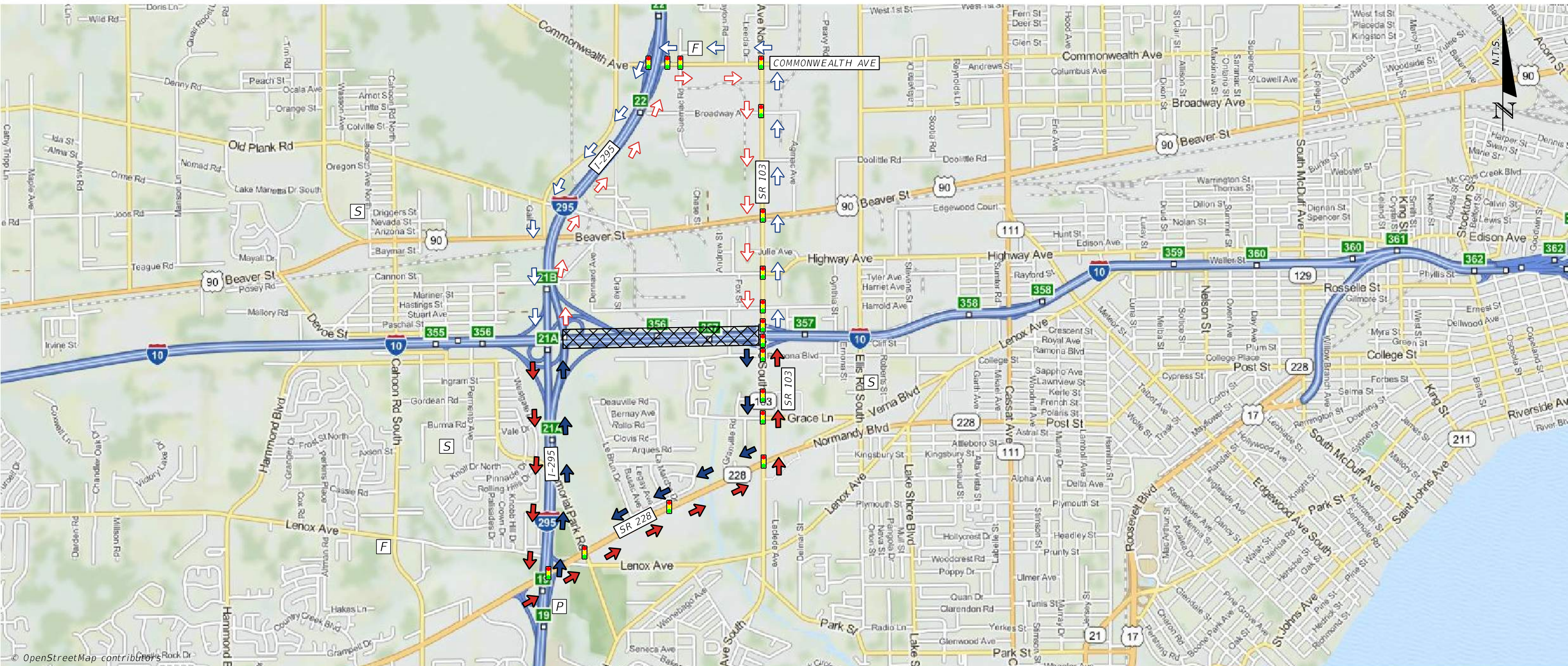


NOTES		LEGEND	
PRIMARY	EB	EASTBOUND VEHICLES DIVERTED NORTH ON HAMMOND BOULEVARD TO BEAVER STREET (US 90) EAST TO LANE AVENUE SOUTH TO I-10 EAST.	AREA OF CLOSURE
	WB	WESTBOUND VEHICLES DIVERTED NORTH ON LANE AVENUE TO BEAVER STREET (US 90) WEST TO HAMMOND BOULEVARD SOUTH TO I-10 WEST.	PRIMARY ROUTE EB
SECONDARY	EB	EASTBOUND VEHICLES DIVERTED SOUTH ON HAMMOND BOULEVARD TO SR 228 (NORMANDY BOULEVARD) EAST TO I-295 NORTH TO I-10 EAST.	PRIMARY ROUTE WB
	WB	WESTBOUND VEHICLES DIVERTED SOUTH ON I-295 TO SR 228 (NORMANDY BOULEVARD) WEST TO HAMMOND BOULEVARD NORTH TO I-10 WEST.	SECONDARY ROUTE EB
			SECONDARY ROUTE WB
			FIRE STATION
			HOSPITAL
			POLICE STATION
			SCHOOL
			SIGNAL



FEBRUARY 2022

I-295 TO SR 103 (LANE AVE)



NOTES

PRIMARY

EB EASTBOUND VEHICLES DIVERTED SOUTH ON I-295 TO SR 228 (NORMANDY BLVD) EAST TO SR 103 (LANE AVE) NORTH TO I-10.

WB WESTBOUND VEHICLES DIVERTED SOUTH ON SR 103 (LANE AVE) TO SR 228 (NORMANDY BLVD) WEST TO I-295 NORTH TO I-10.

SECONDARY

EB EASTBOUND VEHICLES DIVERTED NORTH ON I-295 TO COMMONWEALTH AVE EAST TO SR 103 (LANE AVE) SOUTH TO I-10.

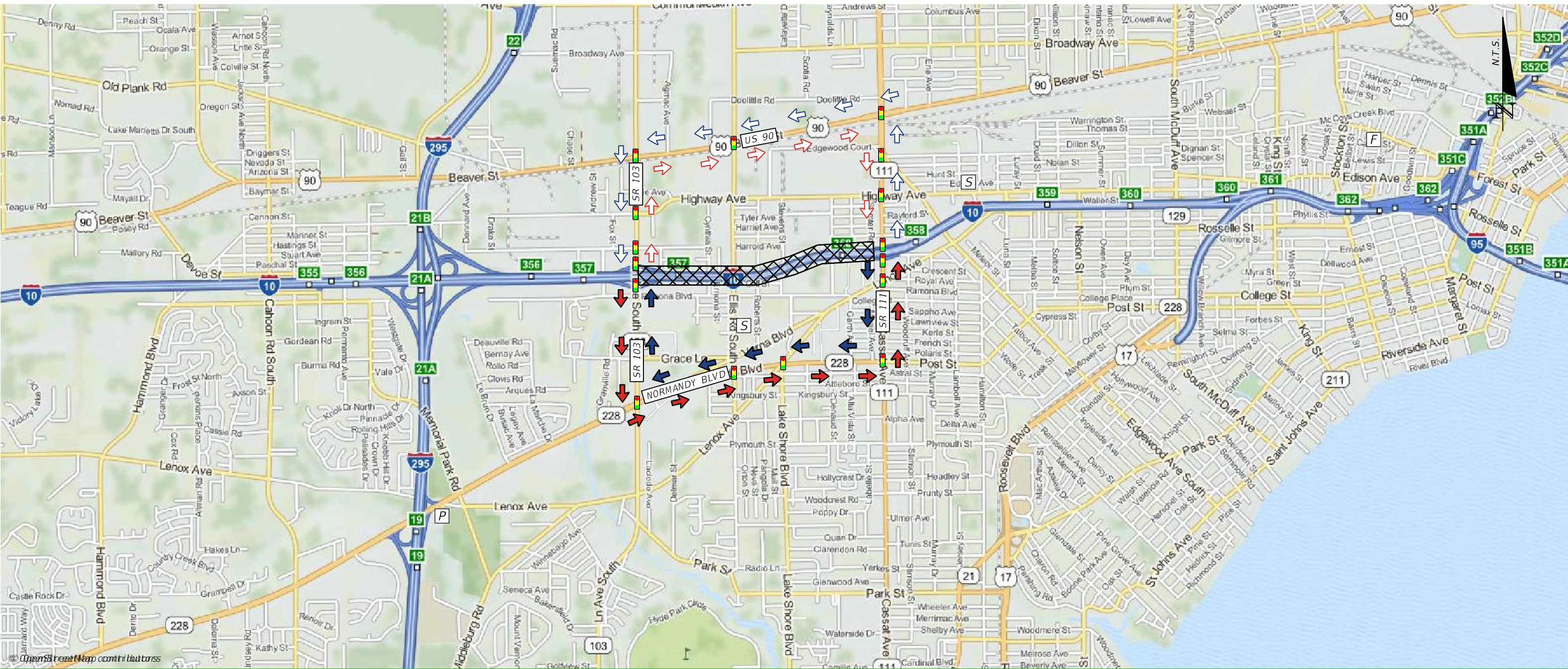
WB WESTBOUND VEHICLE DIVERTED NORTH ON SR 103 (LANE AVE) TO COMMONWEALTH AVE WEST TO I-295 SOUTH TO I-10.

LEGEND

- AREA OF CLOSURE
- PRIMARY ROUTE EB
- PRIMARY ROUTE WB
- SECONDARY ROUTE EB
- SECONDARY ROUTE WB
- FIRE STATION
- HOSPITAL
- POLICE STATION
- SCHOOL
- SIGNAL

-
-
-
-
-

SR 103 (LANE AVE) TO SR 111 (CASSAT AVE/EDGEWOOD AVE)



NOTES

PRIMARY

EB EASTBOUND VEHICLES DIVERTED SOUTH ON SR 103 (LANE AVE) TO SR 228 (NORMANDY BLVD) EAST TO SR 111 (CASSAT AVE/EDGEWOOD AVE) NORTH TO I-10.

WB WESTBOUND VEHICLES DIVERTED SOUTH ON SR 111 (CASSAT AVE/EDGEWOOD AVE) TO SR 228 (NORMANDY BLVD) WEST TO SR 103 (LANE AVE) NORTH TO I-10.

SECONDARY

EB EASTBOUND VEHICLES DIVERTED NORTH ON SR 103 (LANE AVE) TO US 90 (BEAVER ST) EAST TO SR 111 (CASSAT AVE/EDGEWOOD AVE) SOUTH TO I-10.

WB WESTBOUND VEHICLES DIVERTED NORTH ON SR 111 (CASSAT AVE/EDGEWOOD AVE) TO US 90 (BEAVER ST) WEST TO SR 103 (LANE AVE) SOUTH TO I-10.

LEGEND

AREA OF CLOSURE



FIRE STATION



PRIMARY ROUTE EB



HOSPITAL



PRIMARY ROUTE WB



POLICE STATION



SECONDARY ROUTE EB



SCHOOL



SECONDARY ROUTE WB

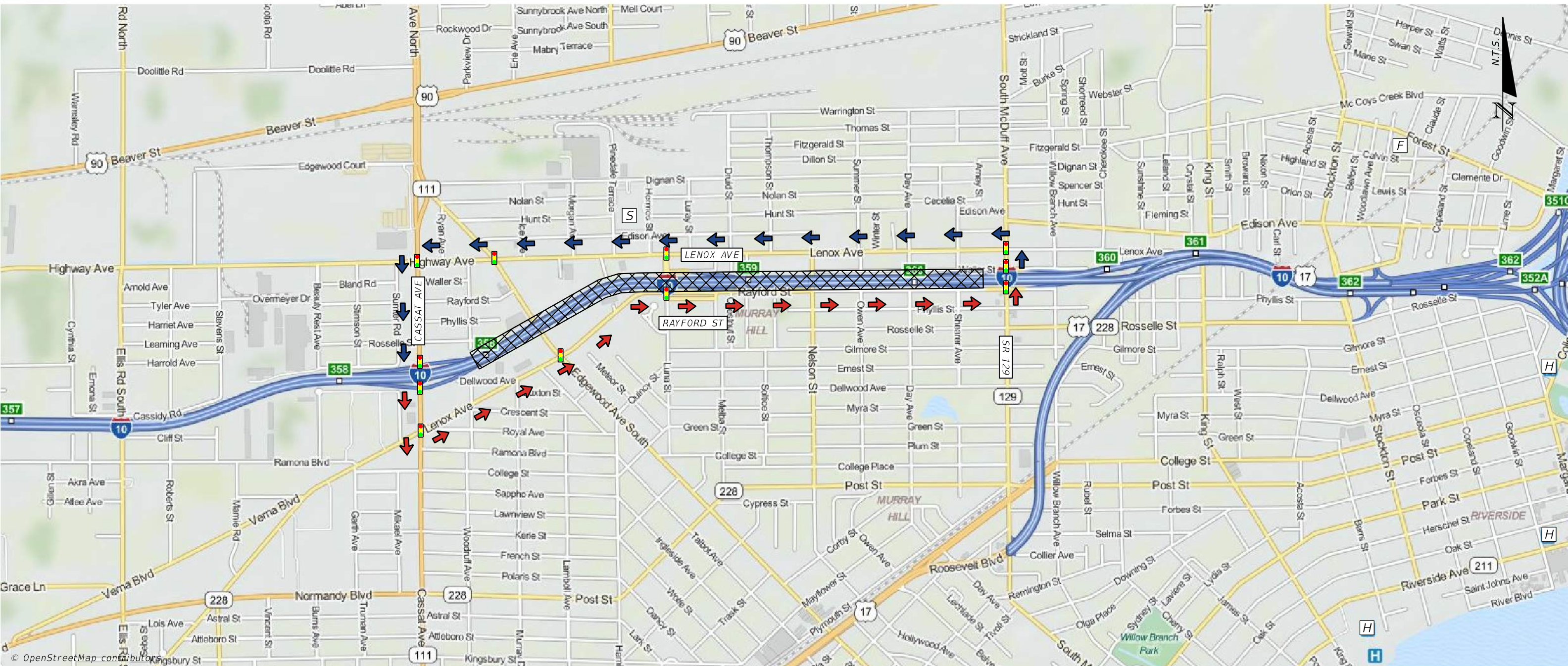


SIGNAL



SR 111 (CASSAT AVE/EDGEWOOD AVE) TO SR 129 (MCDUFF AVE)

FEBRUARY 2022

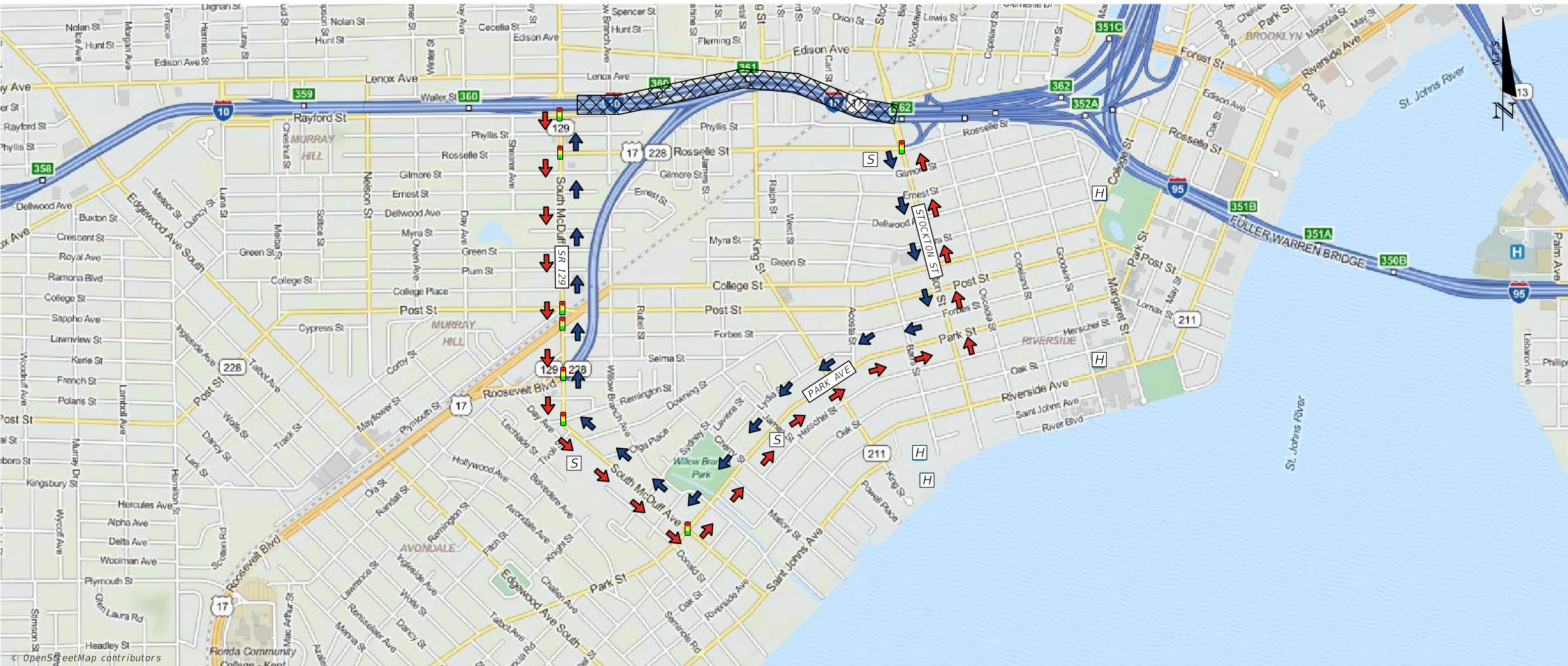


NOTES		LEGEND				
PRIMARY	EB	EASTBOUND VEHICLES DIVERTED SOUTH ON SR 111 (CASSAT AVE) TO LENOX AVE EAST TO RAYFORD ST EAST TO SR 129 (MCDUFF) NORTH TO I-10.	AREA OF CLOSURE		FIRE STATION	
	WB	WESTBOUND VEHICLES DIVERTED NORTH ON SR 129 (MCDUFF AVE) TO LENOX AVE/HIGHWAY AVE WEST TO SR 111 (CASSAT AVE) SOUTH TO I-10.	PRIMARY ROUTE EB		HOSPITAL	
SECONDARY	EB	N/A	PRIMARY ROUTE WB		POLICE STATION	
	WB	N/A	SECONDARY ROUTE EB		SCHOOL	
			SECONDARY ROUTE WB		SIGNAL	



FEBRUARY 2022

SR 129 (MCDUFF AVE) TO STOCKTON ST



NOTES

PRIMARY

EB EASTBOUND VEHICLES DIVERTED SOUTH ON SR 129 (MCDUFF AVE) TO PARK ST EAST TO STOCKTON ST NORTH TO I-10.

WB WESTBOUND VEHICLES DIVERTED SOUTH ON STOCKTON ST TO PARK ST WEST TO SR 129 (MCDUFF AVE) NORTH TO I-10.

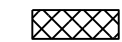
SECONDARY

EB N/A

WB N/A

LEGEND

AREA OF CLOSURE



FIRE STATION



PRIMARY ROUTE EB



HOSPITAL



PRIMARY ROUTE WB



POLICE STATION



SECONDARY ROUTE EB



SCHOOL



SECONDARY ROUTE WB



SIGNAL

